

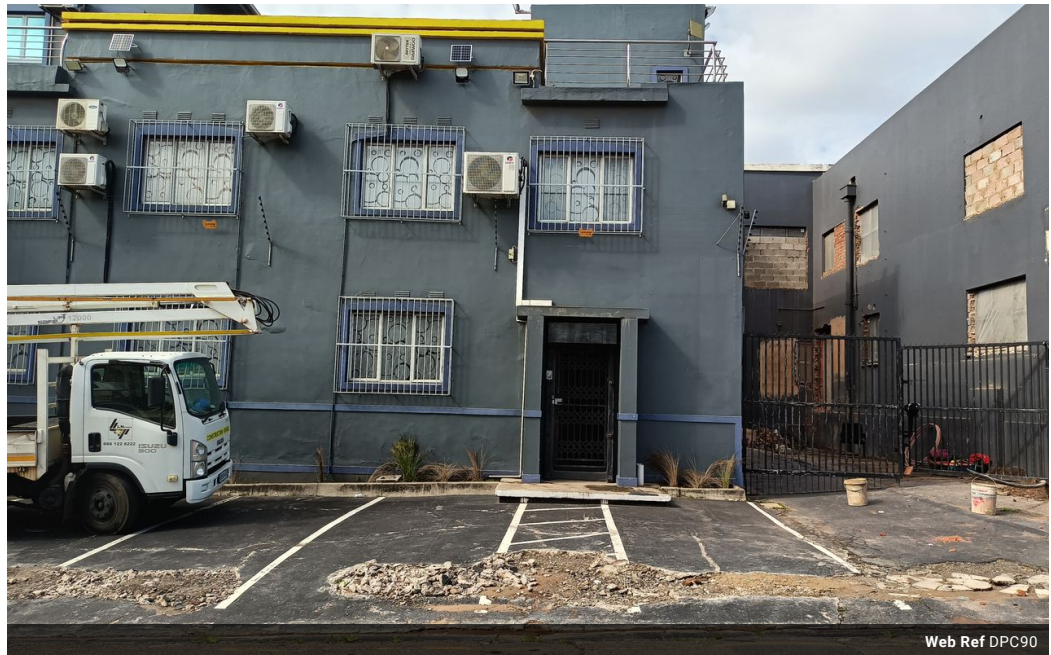


**Mervin Donnelly**  
061 696 8809  
mervin.d@dpg.co.za

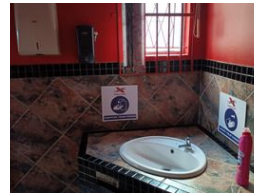
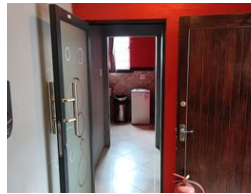
Contact Head Office - Dormehl  
Lite

012 0000000

1170 Moulton Avenue  
Waverley  
0184



Web Ref DPC90



**R5,000,000**

Monthly Rates R8,000 Excl. VAT

0 4

Calling all commercial investors!!!!

Dormehl Phalane proudly presents this commercial building for sale. This property consists of the following:  
size: 529sqm  
ablution facilities  
zoned commercial business  
ample parking  
2 level building with office and retail space

### Features

**Zoning** Commercial

**Exterior**  
Open Parking Bays 4

**Sizes**  
Floor Size 529m<sup>2</sup>  
Land Size 529m<sup>2</sup>