

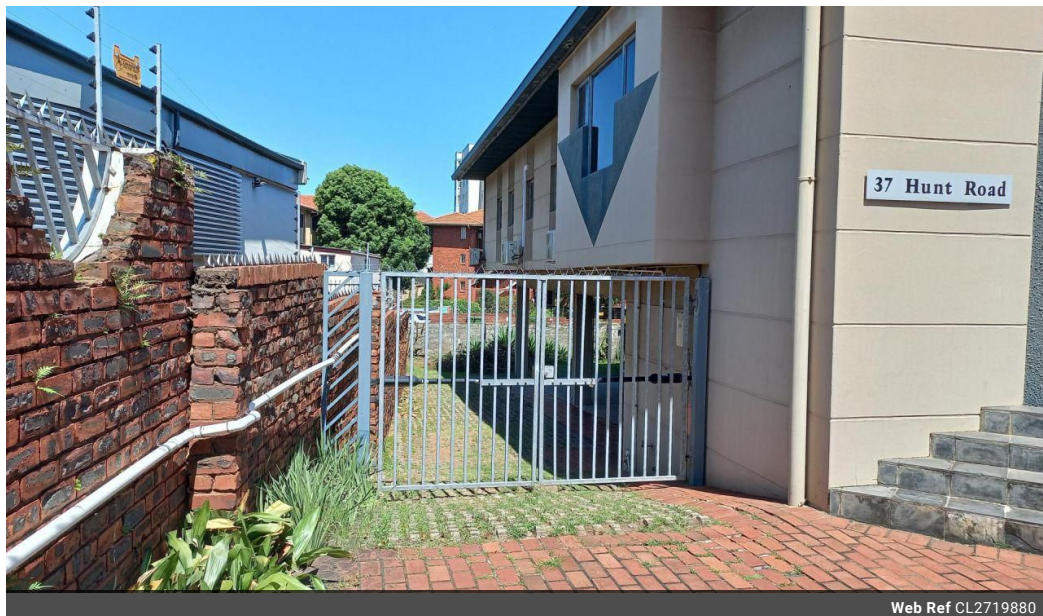


**Mervin Donnelly**  
061 696 8809  
mervin.d@dpg.co.za

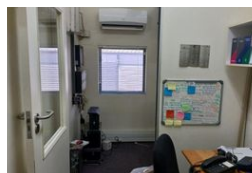
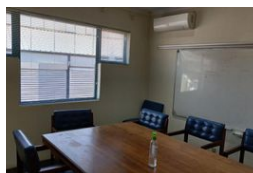
Contact Head Office - Dormehl Lite

012 0000000

1170 Moulton Avenue  
Waverley  
0184



Web Ref CL2719880



R2,350,000

0 0

466m<sup>2</sup> Business For Sale in Glenwood

Well located commercial property for sale!!!

Dormehl Phalane proudly presents this well located commercial property opposite Glenwood village shopping centre for sale. The property consists of the following:  
Size: 466sqm  
Ablution facilities

Features

**Zoning** Commercial

**Interior**  
Power 3 Phase Yes

**Sizes**  
Floor Size 466m<sup>2</sup>  
Land Size 468m<sup>2</sup>

