



**Liam Jacob**  
072 723 5786  
liamjacob@dpg.co.za



**Kyle De Aguiar**  
Candidate Property Practitioner  
Registered with PPRA (FFC 118 969 8)  
072 137 4699  
kyled@dpg.co.za

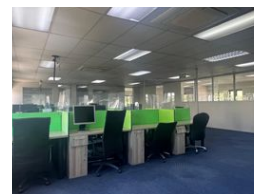
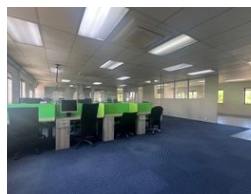
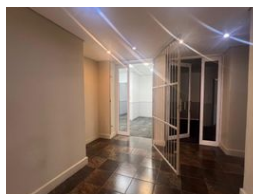
Contact DPG Alberton/JHB South

011 5539200

95 Victoria Street,  
Oakdene,  
Johannesburg,  
Gauteng,  
2190



Web Ref DPC851



R100 per m<sup>2</sup>

Gross Monthly Rental R23,500 Excl. VAT

0 0

### Exceptional Office Space in Meyersdal's Premier Business Hub!

Discover your business's next success story at Kingfisher Office Park, an exclusive and highly sought-after location at 10 Kingfisher Crescent, Meyersdal. This 235m<sup>2</sup> first-floor office suite, priced at just R100/m<sup>2</sup>, combines elegance, functionality, and convenience to create the perfect working environment.

Step into a space designed to inspire productivity and professionalism. This unit features:

- Three private offices for focused work or meetings.
- A spacious open-plan area to encourage collaboration.
- A sleek kitchenette to keep your team energised.
- A welcoming reception area to impress your clients.
- A scenic balcony, perfect for a quick breather or informal chats.

The park itself is designed for modern business needs:

- 24-hour security ensures peace of mind.
- A backup generator keeps you operational at all times.

### Features

<b>Building Name</b>	Kingfisher Office Park
<b>Zoning</b>	Commercial
<b>Sizes</b>	
Floor Size	235m <sup>2</sup>