



Nafeesa Jogee
082 939 9107
nafeesa.jogee@dpg.co.za

Contact Musgrave

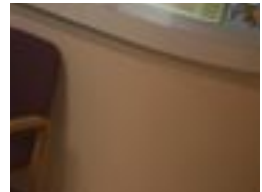
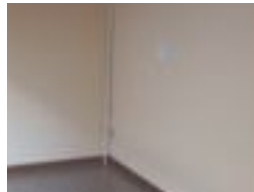
031 3165402

279 Problem Mkhize Road,
Essenwood,
Durban,
4001

FEATURED



Web Ref DPC196



R350 per m²

Gross Monthly Rental R7,000 Excl. VAT

0 0

Three offices to let in Musgrave Park

Dormehl Phalane Musgrave presents three office spaces to let in a sought-after building in Durban. It is Musgrave Park, popular with start-up professionals.

The building has many medical suites, good security and loads of parking for clients.

If you are looking for an opportunity to share one of three offices with reception areas at a very negotiable rate, enquire soon..

Features

Zoning Commercial

Sizes
Floor Size 20m²

