



Mervin Donnelly
061 696 8809
mervin.d@dpg.co.za

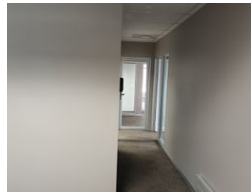
Contact Head Office - Dormehl Lite

012 0000000

1170 Moulton Avenue
Waverley
0184



Web Ref DPC699



R100 per m²

Gross Monthly Rental R23,000 Excl. VAT

0 0

A Grade office to let in Sherwood!!!

Dormehl Phalane proudly presents this A Grade office to let in Sherwood. The property consists of:
size: 230sqm
ablution facilities
kitchen facility
prepaid electricity and water
3 undercover parkings
2 open bay parkings
airconditioned
24 hour security
R120 per square meter

Features

Building Name	West riding		
Zoning	Commercial		
Interior		Sizes	
Power 3 Phase	Yes	Floor Size	230m ²