



Mervin Donnelly
061 696 8809
mervin.d@dpg.co.za

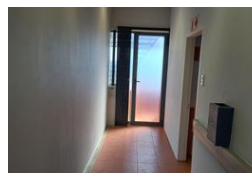
Contact Head Office - Dormehl Lite

012 0000000

1170 Moulton Avenue
Waverley
0184



Web Ref CL2719919



R90 per m²

Gross Monthly Rental R13,500 Excl. VAT

0 0

150m² Business To Let in Sherwood

Office space to let in Sherwood!!!

Dormehl Phalane properties proudly presents office space to let in Sherwood. The property consists of:
size:150 sqm
ablution facilities
kitchen 3 parking bays
operating expense R500 per aircon per year

Features

Zoning Commercial

Interior

Air Conditioning Yes
Power 3 Phase Yes

Sizes

Floor Size 150m²

