



Naren Ramkisson
079 962 0185
naren.ramkisson@dpg.co.za

Contact **Musgrave**

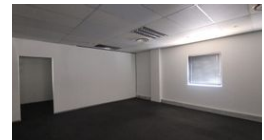
031 3165402

279 Problem Mkhize Road,
Essenwood,
Durban,
4001

FEATURED



Web Ref DPC822



R127 per m²

Gross Monthly Rental R82,354 Excl. VAT

0 0

645m² commercial space to let in a secure business park

Dormehl Phalane Musgrave presents to let, a premier corporate commercial space in a well-secured business park. It is ideal for established businesses seeking a professional environment.

- 645 m² corporate commercial space
- Secure business park with 24/7 access control and CCTV
- Modern architecture with high ceilings and ample natural light
- Air-conditioned offices and open-plan areas
- Fiber-optic connectivity and high-speed internet
- Easy access to major highways (N2, N3, and M7)

Specifications

- Size: 645 m²
- Layout: 3 open-plan areas, 11 private offices, and a boardroom
- Security: 24/7 access control, CCTV and on-site guards

Features

Zoning Commercial

Interior

Air Conditioning Yes
Power 3 Phase Yes

Sizes

Floor Size 645m²

