

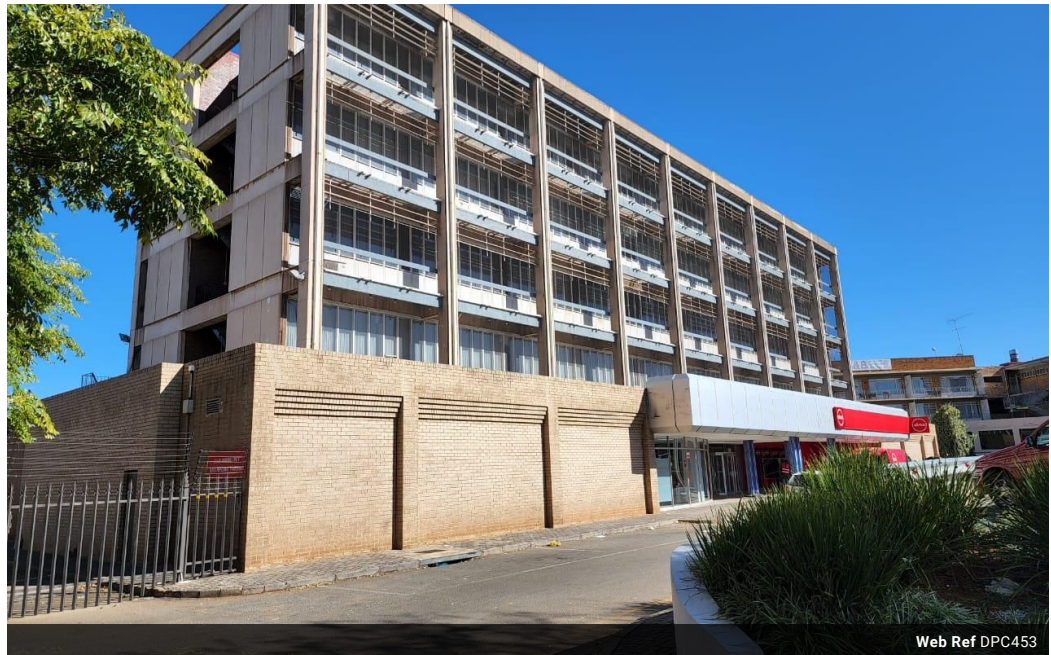


Michelle Bow
0827429033
michellebow@dpg.co.za

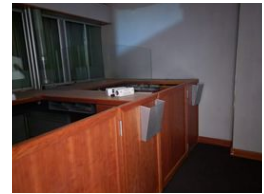
Contact Vanderbijlpark / Sasolburg

016 0042353

Shop 2,
The Palms Shopping Center,
Louis Trichardt Blvd,
Vanderbijlpark,
1911



Web Ref DPC453



R48,150 per m²

Gross Monthly Rental R48,150 Excl. VAT

0 0

Large Office Space Available for Rent- Ideal for Consultations, Collage and Financial Institution

- Rental per floor - Different floors available estimated 600 meters squared each
- Multiple offices in cubical style with reception
- Ladies and Gents bathrooms
- Kitchenette
- Walk in safe
- Elevators and stairs available
- Parking available at additional cost

Features

Zoning Commercial

