

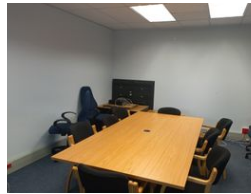


Mervin Donnelly
061 696 8809
mervin.d@dpg.co.za

Contact Head Office - Dormehl Lite

012 0000000

1170 Moulton Avenue
Waverley
0184



R90 per m²

Gross Monthly Rental R35,190 Excl. VAT

0 0

Office space to let in Westville!!!

Dormehl Phalane proudly presents this office to let in Westville. This property consists of:
size: 391sqm
ablution facilities
parking
kitchenet
Air conditioned

Features

Zoning Commercial

Sizes
Floor Size 391m²