

# 1,100m<sup>2</sup> Building To Let in Westmead



**Mervin Donnelly**  
061 696 8809  
mervin.d@dpg.co.za

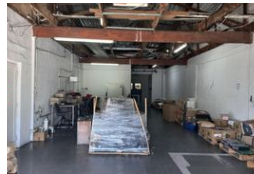
Contact Head Office - Dormehl Lite

012 0000000

1170 Moulton Avenue  
Waverley  
0184



Web Ref CL2719909



R95 per m<sup>2</sup>

Gross Monthly Rental R95,000 Excl. VAT

0 0

## 1,100m<sup>2</sup> Building To Let in Westmead

Industrial space to let in Westmead!!!

Dormehl Phalane proudly presents this industrial space to let in Westmead. The property consists of the following:

- 1100 sqm
- R95 per square meter
- 2 levels
- Ablution facilities on both levels
- 1000 sqm upper level
- 100sqm lower level
- Ample parking space
- 3 phase power
- currently used as a factory
- boardroom
- offices
- canteen
- airconditioned in factory area

## Features

**Zoning** Industrial

**Sizes**  
Floor Size 1,100m<sup>2</sup>

