



Mervin Donnelly
061 696 8809
mervin.d@dpg.co.za

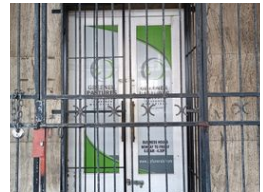
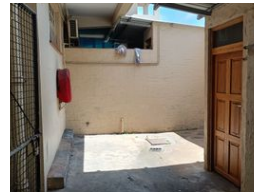
Contact Head Office - Dormehl Lite

012 0000000

1170 Moulton Avenue
Waverley
0184



Web Ref DPC334



R13,400,000

0 0

Mixed use commercial/residential block for sale in Glenwood!!!

Dormehl Phalane proudly presents this mix use commercial/residential block for sale in Glenwood. The property consists of:

- 8 shops
- 16 flats
- 6 lockup garages
- 6 open bay parking's
- well maintained building
- selling as a going concern
- excellent net income
- good return on investment

Features

Zoning Mixed Use

Sizes
Floor Size 1,346m²