



Hettie Chadinha
082 447 6021
hettiec@dpg.co.za

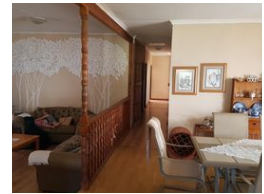
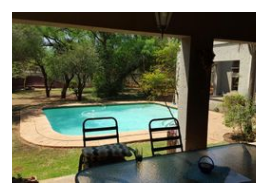
Contact Head Office - Dormehl Lite

012 0000000

1170 Moulton Avenue
Waverley
0184



Web Ref DPAT-0801



R2,350,000

2 0

Small holding for Sale in Tropical Valley, Kameeldrift East.

Price drastically reduced! This beautiful, big modern house on 6000sq plot is situated in this safe, popular area of Tropical Valley, Kameeldrift East, near Die Poort Primary and Curro schools. The house consist of 4 bedr, 2 full bathr, 3 big living areas, kitchen with gas stove, pantry, scullery, study. Burglar bars and Trellidoors fitted, 2 garages, big round patio at pool, boma, outside room and

Features

Title	Freehold		
Zoning	Mixed Use		
Exterior		Sizes	
Covered Parking Bays	2	Floor Size	1m ²
		Land Size	6,000m ²

