



Hettie Chadinha
082 447 6021
hettiec@dpg.co.za

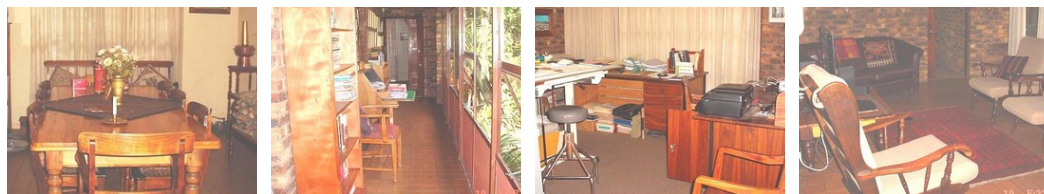
Contact Head Office - Dormehl Lite

012 0000000

1170 Moulton Avenue
Waverley
0184



Web Ref CL2719169



R6,000,000

0 0

DEVELOPERS DREAM IN THE HEART OF MONTANA!

Or if you want to live in peace and tranquility, then this 2,1ha plot with a huge, ultra- neat, stylish double storey house with lots of space has everything you need! 5 Bedrooms, study, 4 bathrooms, guest toilet, 3 big living areas, large kitchen with ELO, pantry. The main house can easily fit 3 families! PLUS a separate flat outside, own parking with 2 bedr, living area, kitchen and bathr. 3 Horse stables, 7 carports, storeroom, pool, boma, tank, lapa, alarm system, aircon .ALSO IDEAL FOR A DEVELOPMENT! Close to all

Features

Title	Freehold
Zoning	Mixed Use
Sizes	
Floor Size	630m ²
Land Size	21,000m ²

