



Leigh Phillips
079 468 3425
leighp@dpg.co.za

Contact Platinum Rentals

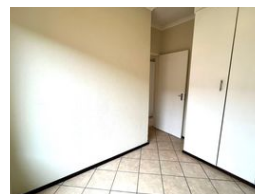
010 0250118

95 Victoria Street
Oakdene
Johannesburg South
2190



SOLE MANDATE

Web Ref DPR15998



R580,000

2 1

Monthly Bond Repayment R5,986.69
Calculated over 20 years at 11% with no deposit.

Transfer Costs R21,217.00 **Bond Costs** R15,795.00
These calculations are only a guide. Please ask your conveyancer for exact calculations.

Monthly Levy R400 **Monthly Rates** R570

Great investment opportunity

This upstairs unit is ideal as a starter investment.

- 2 bedrooms, 1 bathroom and open plan living area with granite topped kitchen.
- Very secure estate
- 1 Under cover parking and 1 open parking
- pre paid electricity
- 24 hour access control
- Communal braai area
- Close to all amenities

Features

Interior		Exterior		Sizes	
Bedrooms	2	Carports / Parkings	2	Floor Size	49m ²
Bathrooms	1	Security	Yes		
Kitchens	1	Pool	No		
Recep. Rooms	1	Views	False		
Furnished	No				

