



Sue Speechly
082 444 0001
suespeechly@dpg.co.za

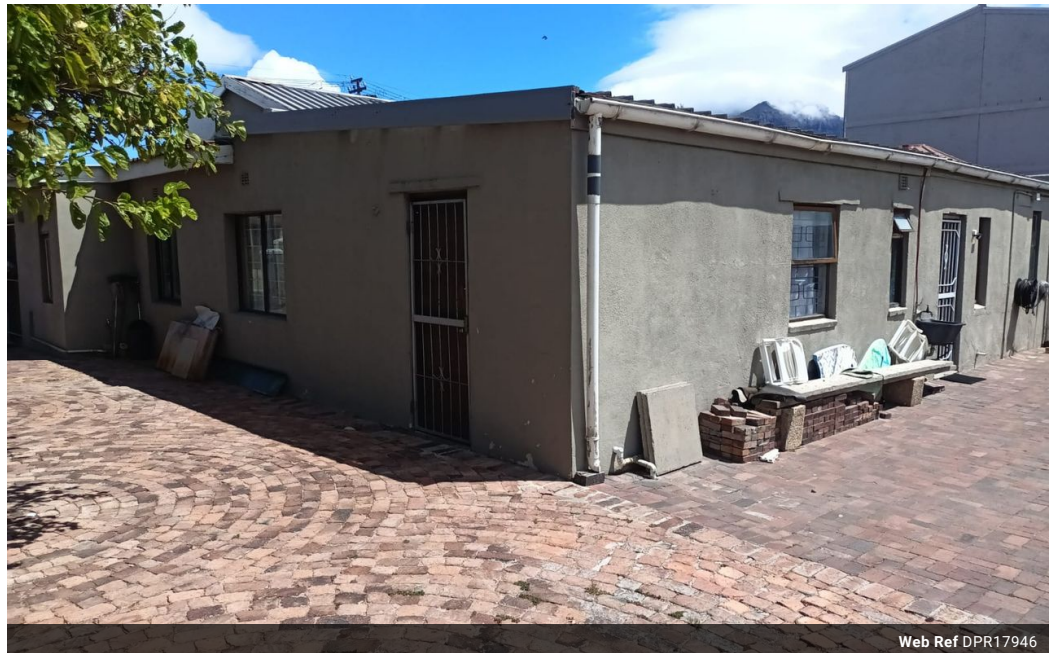


Vickey Dormehl
083 973 2065
vickeydm@dpg.co.za

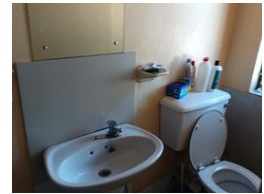
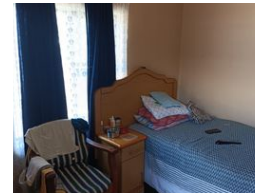
Contact Northern Suburbs
(Western Cape)

012 3323677

Sonstraal Heights,
63 Melody Ridge,
Durbanville



Web Ref DPR17946



R2,699,000

🛏️ 3 🚿 2

Monthly Bond Repayment R27,858.76
Calculated over 20 years at 11% with no deposit.

Transfer Costs R133,807.00 **Bond Costs** R40,300.00
These calculations are only a guide. Please ask your conveyancer for exact calculations.

Multiple income generating opportunity awaits

This versatile property in Maitland, Cape Town, presents a fantastic opportunity for homeowners and investors alike. The main house features three spacious bedrooms and two bathrooms, offering comfortable living with ample space for a family.

- Main house offers 3 bedrooms, 2 bathrooms
- 2-Bedroom Flat – 1 Bathroom
- 1-Bedroom Flat – 1 Bathroom
- 2-Bedroom Flat – 1 Bathroom
- Bachelor Flat

Conveniently located near major transport routes, shops, and schools, this property combines prime location with exceptional investment potential. Don't miss this rare opportunity—schedule a viewing today!

Features

| Interior | | Exterior | | Sizes | |
|--------------|----|---------------------|-------|------------|-------------------|
| Bedrooms | 3 | Carports / Parkings | 4 | Floor Size | 275m ² |
| Bathrooms | 2 | Security | No | Land Size | 67m ² |
| Kitchens | 1 | Pool | No | | |
| Recep. Rooms | 2 | Views | False | | |
| Furnished | No | | | | |

