

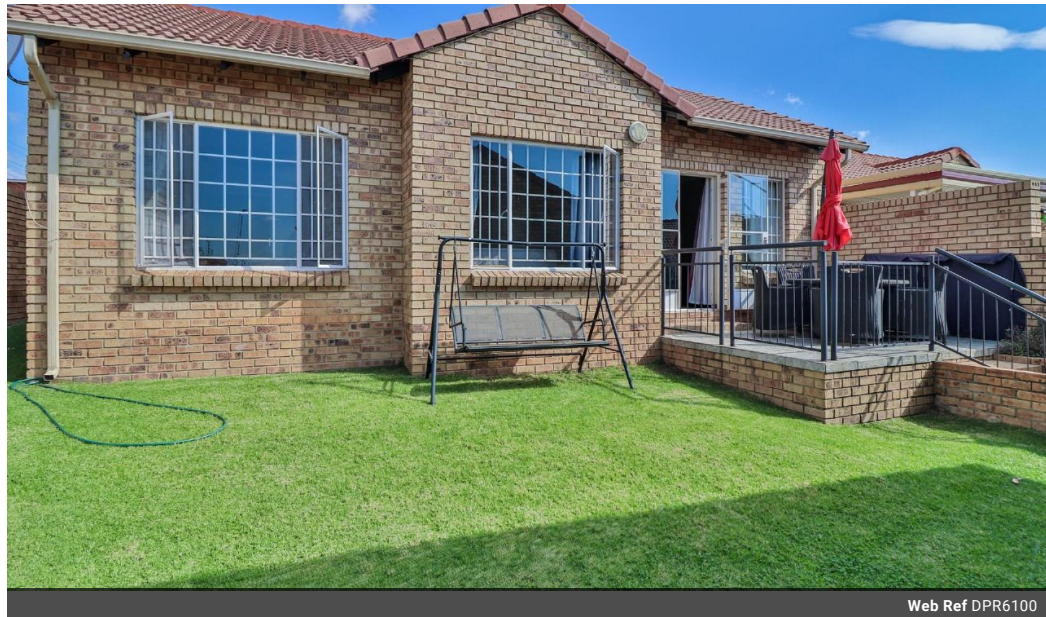


**Audette Holtzhausen**  
082 054 2930  
audetteholtzhausen@dpg.co.za

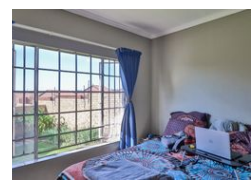
Contact Pretoria Moot

012 3323677

1170 Moulton Ave  
Waverley  
Pretoria  
0186



Web Ref DPR6100



**R1,050,000**

🛏️ 2 🚿 2 🏠 1

**Monthly Bond Repayment** R10,837.98  
Calculated over 20 years at 11% with no deposit.

**Transfer Costs** R32,749.00    **Bond Costs** R25,220.00  
These calculations are only a guide. Please ask your conveyancer for exact calculations.

**Monthly Levy** R1,500    **Monthly Rates** R903    **Sectional Title Levy** R1,500

Perfect home for a small family or lock up and go!

Dreaming of a home sweet home in the heart of Centurion? This little gem is the perfect starter kit for your property journey or a handy lock-up-and-go. Tucked away in a secure complex, it's a total steal at a great price.

Inside, you'll find a bright and breezy space with 2 cozy bedrooms and 2 sparkling bathrooms. Whip up a feast in the fully fitted kitchen and savor it in the open plan lounge or dining room. Plus, a cute little garden and a lock-up garage will make every day feel like a vacation. On those hot days take a dip in the communal pool to cool down before your evening braai. This price is not negotiable - nevertheless you won't go wrong with this property!

### Features

| Pets Allowed    |    | Yes                 |       |              |                     |
|-----------------|----|---------------------|-------|--------------|---------------------|
| <b>Interior</b> |    | <b>Exterior</b>     |       | <b>Sizes</b> |                     |
| Bedrooms        | 2  | Garages             | 1     | Floor Size   | 91m <sup>2</sup>    |
| Bathrooms       | 2  | Carports / Parkings | 1     | Land Size    | 9,604m <sup>2</sup> |
| Kitchens        | 1  | Security            | Yes   |              |                     |
| Recep. Rooms    | 2  | Pool                | Yes   |              |                     |
| Furnished       | No | Views               | False |              |                     |

