

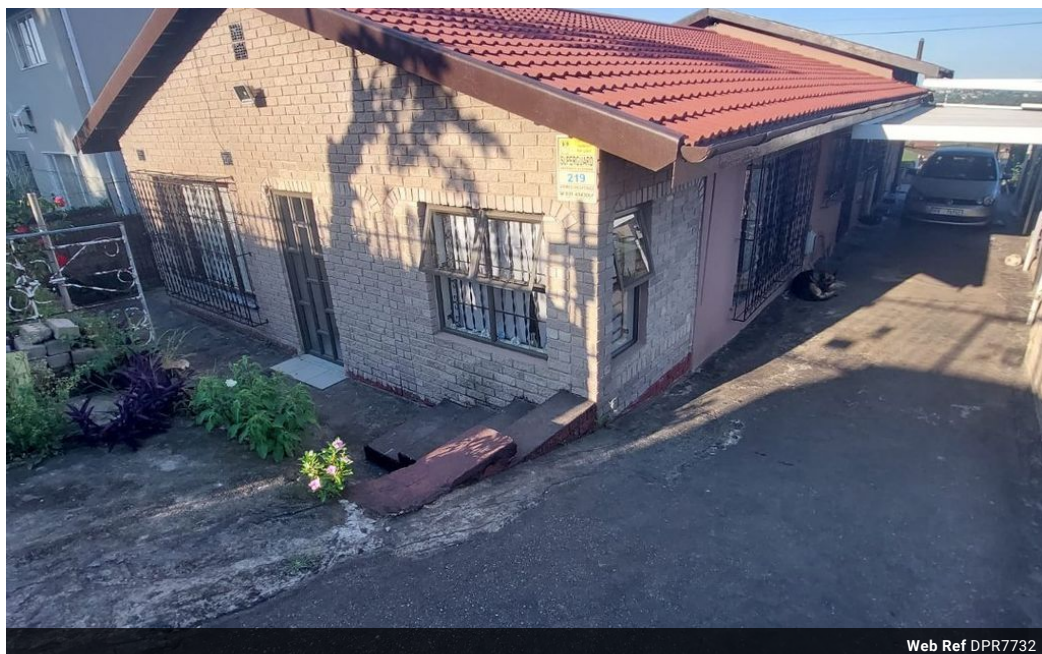


**Norma Radebe**  
Candidate Property Practitioner  
Registered with PPRA (FFC 119 126 3)  
071 552 4016  
normaradebe@dpg.co.za

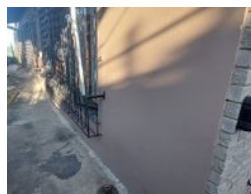
Contact Pinetown

031 8229071

39 Glenugie Road  
Pinetown



Web Ref DPR7732



**R1,175,000**

4   2   2

**Monthly Bond Repayment** R12,128.21  
Calculated over 20 years at 11% with no deposit.

**Transfer Costs** R32,749.00   **Bond Costs** R25,220.00

These calculations are only a guide. Please ask your conveyancer for exact calculations.

**Monthly Rates** R871

### 4 Bedroom House For Sale in Shallcross

This is an ideally located 4 bedroom house. Close to the mall, school and all essential services. 4 spacious bedrooms with the main bedroom with an en-suite. the other 3 are airy with built in cupboards, spacious lounge & dining room have pine ceilings, a fully fitted kitchen, ELO/HOB/EXT, built in cupboards and double garage. Should this sound ideal to you, don't hesitate to contact me.

### Features

<b>Pets Allowed</b>	Yes				
<b>Interior</b>		<b>Exterior</b>		<b>Sizes</b>	
Bedrooms	4	Garages	2	Land Size	297m <sup>2</sup>
Bathrooms	2	Carports / Parkings	3		
Kitchens	1	Security	Yes		
Recep. Rooms	2	Pool	No		
Furnished	No	Views	False		