

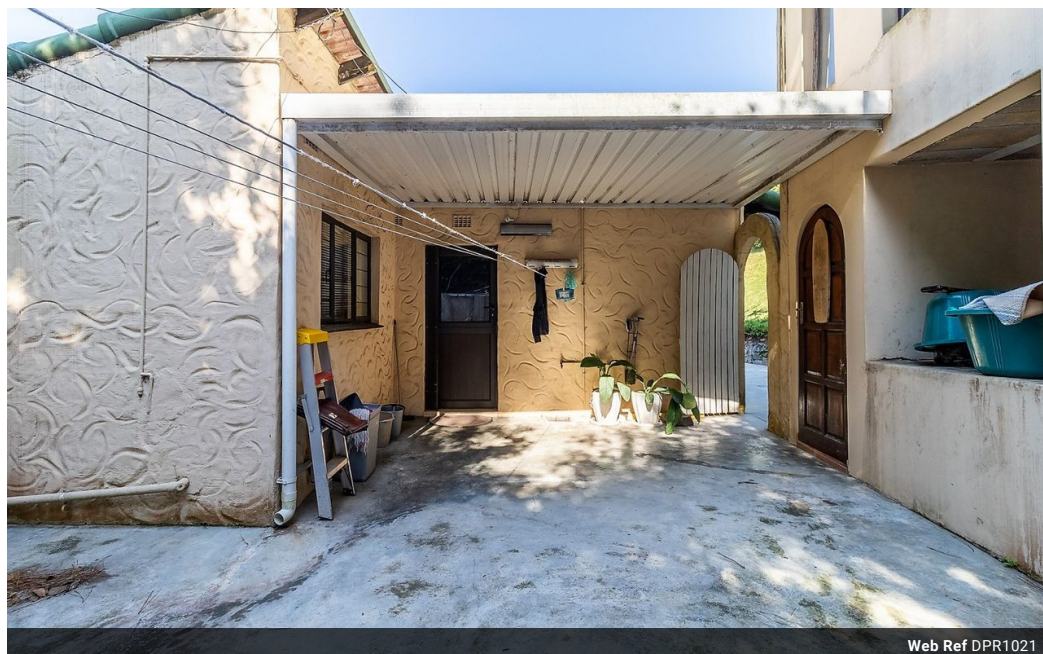


Christy Du Preez
082 300 8532
christydupreez@dpg.co.za

Contact Westville A-Team

031 2664343

1 Knightbridge,
16 Westville Road,
Westville



Web Ref DPR1021



R1,749,000

🛏️ 4 🚿 3 🚗 2

Monthly Bond Repayment R18,052.97

Calculated over 20 years at 11% with no deposit.

Transfer Costs R57,979.00 **Bond Costs** R30,875.00

These calculations are only a guide. Please ask your conveyancer for exact calculations.

Monthly Rates R2,121

Central family home!

Convenience at its best!

Spacious 4 bedroomed family home. Lovely flow from your lounge and dining room with a seperate fitted kitchen.

Sliding doors lead out onto a deck with scenic views and distant sea views. Spacious garden.

The bonus is a 1 bed bachelor flatlet.

Double garages & pool.

Call me for a viewing!

Features

Pets Allowed Yes

Interior

Bedrooms	4
Bathrooms	3
Kitchens	1
Recep. Rooms	2
Furnished	No

Extras

Water Tanks Wendy House

Exterior

Garages	2
Carports / Parkings	3
Security	Yes
Pool	Yes
Views	True

Sizes

Land Size	2,024m²
-----------	---------