



Noleen Dunn
084 803 9972
noleendunn@dpg.co.za



Nicci Arnott
071 887 0870
nicciarnott@dpg.co.za

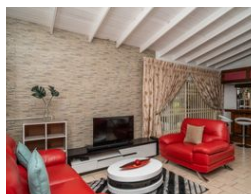
Contact Westville

031 2669091

Shop 1, Gordana Court,
22/26 Salisbury Avenue,
Westville



Web Ref DPR7025



R1,795,000

3 Bedrooms 2 Bathrooms 2 Carports

Monthly Bond Repayment R18,527.78
Calculated over 20 years at 11% with no deposit.

Transfer Costs R60,739.00 **Bond Costs** R30,875.00

These calculations are only a guide. Please ask your conveyancer for exact calculations.

Monthly Rates R1,500

PERFECT ENTERTAINMENT HOME!!!

Situated in the lovely neighbourhood of Atholl Heights, this property conveniently provides quick access to all the local shops, schools and the main freeway. It presents with 3 spacious bedrooms and 2 bathrooms. The bedrooms have been fitted with new built in cupboards. The house has just been newly refurbished and offers the comfort of modern living. It has staff quarters and a double garage. The bonus is the office area that leads out into a large built in bar which in turn leads out to a lovely large swimming pool and a Jacuzzi., creating a lovely area for family functions and entertainment of friends. Contact us to arrange a special viewing for you.

Features

Pets Allowed		Yes			
Interior		Exterior		Sizes	
Bedrooms	3	Garages	2	Land Size	968m ²
Bathrooms	2	Carports / Parkings	2		
Kitchens	1	Security	Yes		
Recep. Rooms	2	Dom. Accom.	1		
Studies	1	Pool	Yes		
Furnished	No	Views	False		

