

Christy Du Preez
082 300 8532
christydupreez@dpg.co.za

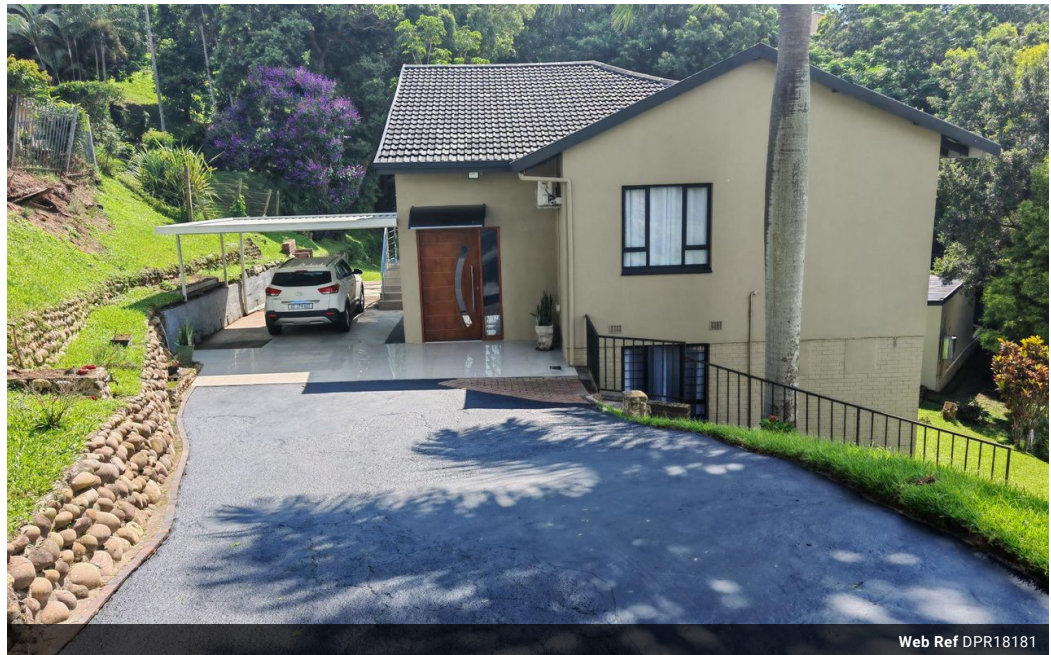


Lindi Honey
082 444 8996
lindhoney@dpg.co.za

Contact Westville A-Team

031 2664343

1 Knightbridge,
16 Westville Road,
Westville



Web Ref DPR18181



R2,595,000

3 2.5

Monthly Bond Repayment R26,785.29
Calculated over 20 years at 11% with no deposit.

Transfer Costs R123,320.00 **Bond Costs** R38,415.00
These calculations are only a guide. Please ask your conveyancer for exact calculations.

Monthly Rates R2,002

Tranquil Haven of Modern Luxury in Westville with Independent Flatlet!

Dive into the oasis of tranquility and modernity in the heart of bustling Westville. This double story marvel is an epitome of a modern home, elegantly draped with porcelain tiles muscle in your living areas, promising you a plush lifestyle wrapped in comfort.

The brightness and flood of natural light streaming through the expansive windows bring an atmosphere of breeziness into the space. The modern interiors are accented with neutral tones, creating a perfect canvas for you to imprint your personal style onto. Each nook and cranny reflect thoughtful design converging style and function seamlessly.

Offering an open plan lounge and dining room neatly flowing into a contemporary kitchen elevated with caesar stone tops. Whether you're a home cook or a professional chef, the kitchen is equipped for your culinary adventures....

Features

Pets Allowed	Yes		
Interior		Exterior	
Bedrooms	3	Carports / Parkings	4
Bathrooms	2.5	Security	Yes
Kitchens	1	Pool	No
Recep. Rooms	2	Views	True
Furnished	No		