



Noleen Dunn
084 803 9972
noleendunn@dpg.co.za

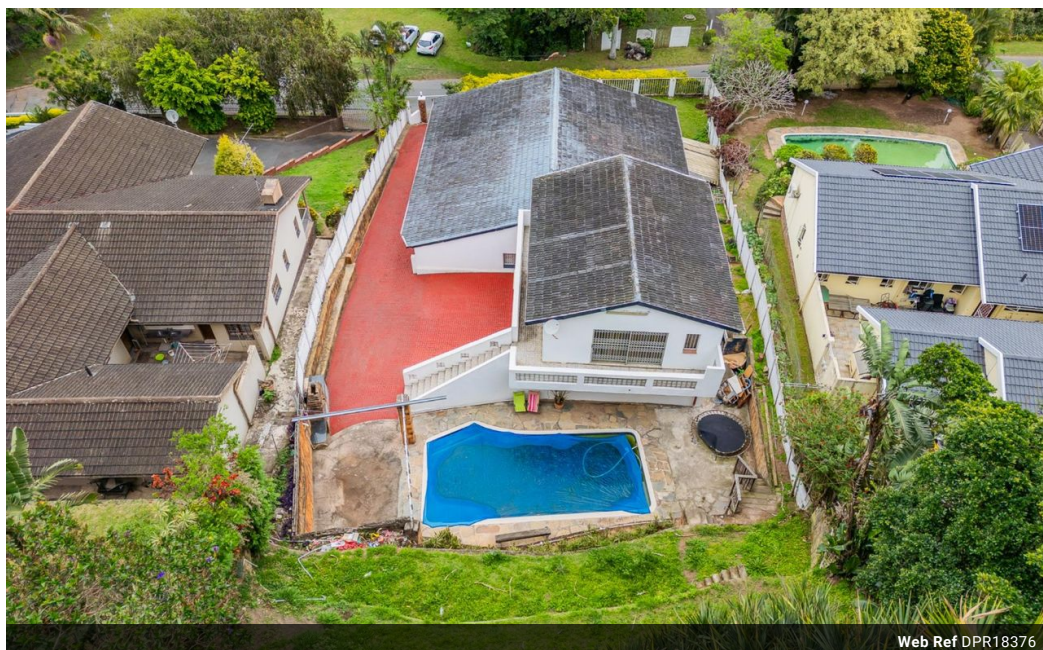


Nicci Arnott
071 887 0870
nicciarnott@dpg.co.za

Contact Westville

031 2669091

Shop 1, Gordana Court,
22/26 Salisbury Avenue,
Westville



Web Ref DPR18376



R1,899,000

3 Bedrooms 2 Bathrooms 2 Carports

Monthly Bond Repayment R19,601.26
Calculated over 20 years at 11% with no deposit.

Transfer Costs R69,146.00 **Bond Costs** R32,760.00

These calculations are only a guide. Please ask your conveyancer for exact calculations.

Monthly Rates R1,250

IMMACULATE FAMILY HOME

Beautifully presented 3 Bed Family home with 3 fully fitted bedrooms that ooze modern elegance. The main bedroom is complete with its very own en suite!

Adding to the generous floor plan are 2 warm and inviting lounges. The separate study area makes work from home a pleasure while the fully fitted kitchen, complete with an enclosed courtyard, doubles as a family hotspot where delicious meals are created and shared.

For your motoring needs, this real estate gem presents a secure, double garage. What's more? There is plentiful additional space for up to 6 cars - a feature not often found in most family homes.

What sets this property apart is its exciting potential for a granny flat. The current large gym room can easily be converted into a quaint and private dwelling where your loved ones will enjoy their own space once...

Features

Pets Allowed	Yes		
Interior		Exterior	Sizes
Bedrooms	3	Garages	2
Bathrooms	2	Carports / Parkings	6
Kitchens	1	Security	Yes
Recep. Rooms	3	Dom. Accom.	1
Studies	1	Pool	Yes
Furnished	No	Views	True
		Land Size	1,112m ²

