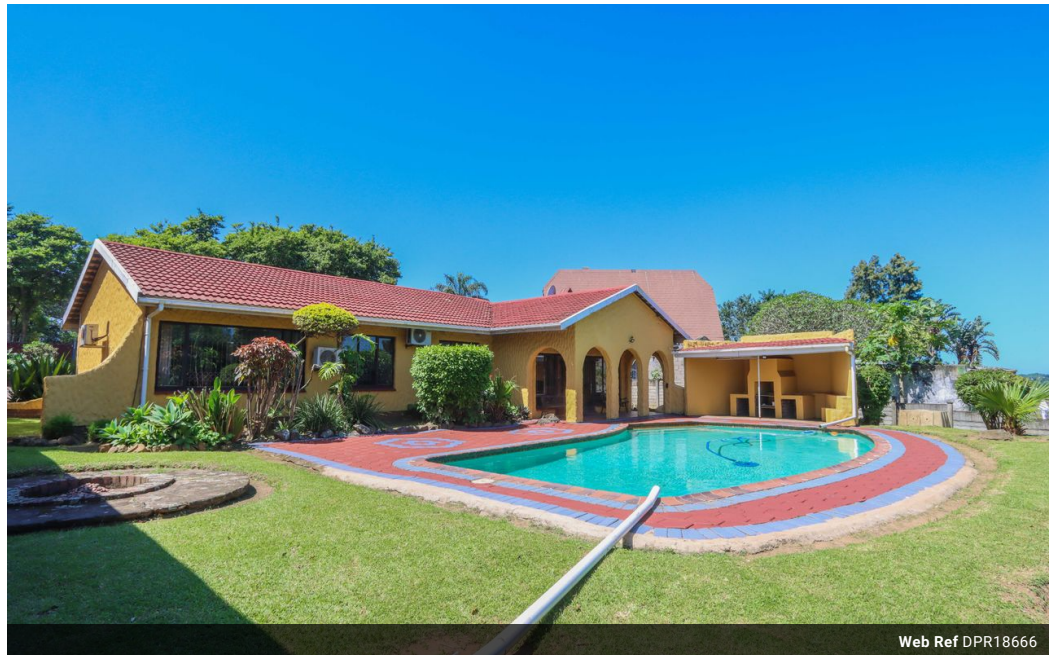


**Christy Du Preez**  
082 300 8532  
christydupreez@dpg.co.za

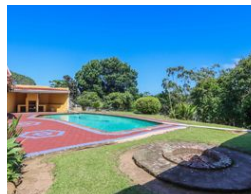
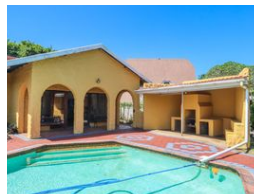
Contact Westville A-Team

031 2664343

1 Knightbridge,  
16 Westville Road,  
Westville



Web Ref DPR18666



**R1,999,000**

🛏️ 3   🚿 2   🏠 2

**Monthly Bond Repayment** R20,633.45  
Calculated over 20 years at 11% with no deposit.

**Transfer Costs** R75,146.00   **Bond Costs** R32,760.00

These calculations are only a guide. Please ask your conveyancer for exact calculations.

**Monthly Rates** R2,000

**Charming Family Haven in Westville: A Lifetime of Memories Awaits!**

Presenting a MAGNIFICENT home, an adored family asset, lived in for 21 years. This quality solid home sits prestigiously in the peaceful, leafy suburb of Westville. Tranquil, yet conveniently located close to Pitlochry School, it boasts a hearty combination of comfort, charm, and immaculate design.

Rest your eyes upon lofty high ceilings that encapsulate warmth and welcome you into a spacious, sunlit large lounge. Adjacent lies a separate dining room, an intimate space to entertain guests or enjoy family meals. The modern kitchen, a haven for the culinary enthusiast, boasts loads of cupboard space, promising to accommodate all your cooking essentials with grace. It also includes an undercover washing area and a scullery, ensuring a clean, clutter-free environment.

Comfort and luxury make a dashing pair with automated double...

**Features**

<b>Pets Allowed</b>	Yes				
<b>Interior</b>		<b>Exterior</b>		<b>Sizes</b>	
Bedrooms	3	Garages	2	Land Size	2,008m <sup>2</sup>
Bathrooms	2	Carports / Parkings	13		
Kitchens	1	Security	Yes		
Recep. Rooms	2	Dom. Accom.	1		
Furnished	No	Pool	Yes		
		Views	True		