

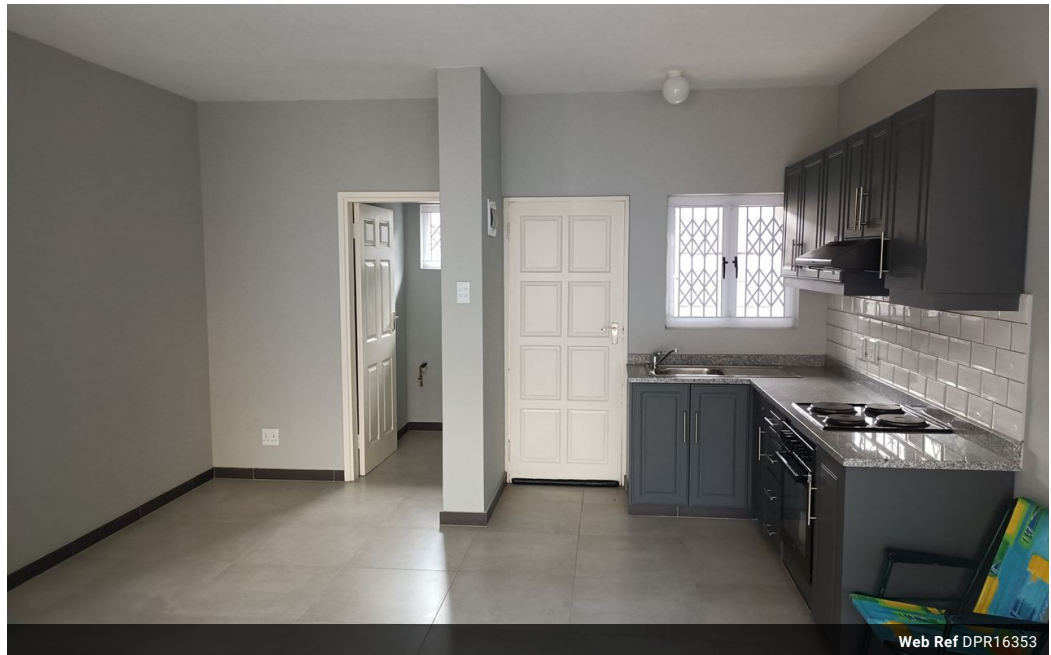


**Mervin Donnelly**  
061 696 8809  
mervin.d@dpg.co.za

Contact Head Office - Dormehl Lite

012 0000000

1170 Moulton Avenue  
Waverley  
0184



Web Ref DPR16353



**R10,000,000**

**Monthly Bond Repayment** R103,218.84  
Calculated over 20 years at 11% with no deposit.

**Transfer Costs** R981,364.00    **Bond Costs** R84,785.00  
These calculations are only a guide. Please ask your conveyancer for exact calculations.

16    16

Newly built block of flats for sale!!!

Dormehl Phalane proudly presents this newly built modern block of flats for sale off ridge road. The property consists of the following:

- 8 units
- all 2 bedroom units
- modern finishes
- 16 parking bays

To view this property please contact Mervin Donnelly

**Features**

**Interior**

Bedrooms	16
Bathrooms	16
Kitchens	16
Recep. Rooms	16
Furnished	No

**Exterior**

Carports / Parkings	16
Security	Yes
Pool	No
Views	False