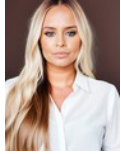




Lindi Honey
082 444 8996
lindhoney@dpg.co.za



Christy Du Preez
082 300 8532

christydupreez@dpg.co.za

Contact Westville A-Team

031 2664343

1 Knightbridge,
16 Westville Road,
Westville



Web Ref DPG2762442



R3,150,000

Monthly Bond Repayment R32,513.93
Calculated over 20 years at 11% with no deposit.

Transfer Costs R178,879.00 **Bond Costs** R44,070.00
These calculations are only a guide. Please ask your conveyancer for exact calculations.

Monthly Rates R2,094

🛏️ 4 🚿 2 🚗 2

Beautiful views from this entertainer's delight

Be pleasantly surprised as you enter this immaculate 4 bedroom home. Beautiful large entrance hall leads onto open lounge and dining room area and onto another tv lounge. Large walk in pantry in kitchen, granite tops plus double oven. Separate outside wash up and laundry area.

Double doors separate the extra large games room from the main living area which leads out onto covered entertainment area with built in braai and pizza oven.

Lovely views of Durban from entertainment area. Separate 1 bedroom garden cottage. Double carport in front of double auto garage. CCTV and electric fencing.

Alarm can be monitored and activated from anywhere in the world. Storeroom plus staff accommodation with own bathroom.

what more could you want?

Features

| | | | | |
|---------------------|-----|---------------------|------|---------------------|
| Pets Allowed | Yes | | | |
| Interior | | Exterior | | Sizes |
| Bedrooms | 4 | Garages | 2 | Land Size |
| Bathrooms | 2 | Carports / Parkings | 2 | 1,852m ² |
| Kitchens | 1 | Security | Yes | |
| Recep. Rooms | 4 | Dom. Accom. | 1 | |
| Furnished | No | Pool | No | |
| | | Views | True | |

