

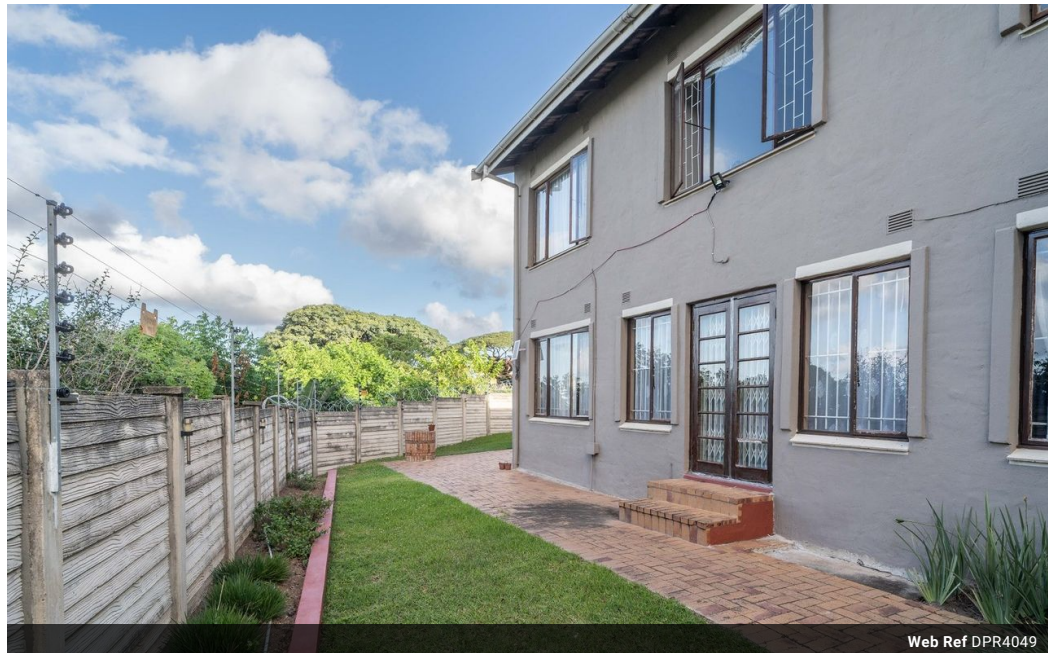
Noleen Dunn
084 803 9972
noleendunn@dpg.co.za



Nicci Arnott
071 887 0870
nicciarnott@dpg.co.za

Contact Westville
031 2669091

Shop 1, Gordana Court,
22/26 Salisbury Avenue,
Westville



Web Ref DPR4049



R1,850,000

3 Bedrooms 2.5 Bathrooms 1 Garage

Monthly Bond Repayment R19,095.49
Calculated over 20 years at 11% with no deposit.

Transfer Costs R66,206.00 **Bond Costs** R32,760.00

These calculations are only a guide. Please ask your conveyancer for exact calculations.

Monthly Levy R850 **Monthly Rates** R1,135

SECURE UNIT IN SMALL COMPLEX!

This is one of only 6 units and a short drive to all Westville amenities.

Upstairs features 3 tiled bedrooms with built in cupboards and ceiling fans with en suite and a family bathroom. Downstairs boasts not one but 2 spacious tiled lounges and a dining area that leads out to your private garden. This home also has a modern granite fitted kitchen with an enclosed courtyard area to store all your extra goodies...AND...a guest toilet.

A huge bonus of this unit is that it is an end unit with extra space.

Why pay rent when you can own?

Features

Pets Allowed Yes

Interior

Bedrooms 3
Bathrooms 2.5
Kitchens 1
Recep. Rooms 3
Furnished No

Exterior

Garages 1
Carports / Parkings 2
Security Yes
Pool No
Views True

Sizes

Floor Size 166m²
Land Size 5,078m²

Extras

Alarm System Built in Wardrobes Cooling Fans Courtyard Double Storey Intercom Open Plan Room

