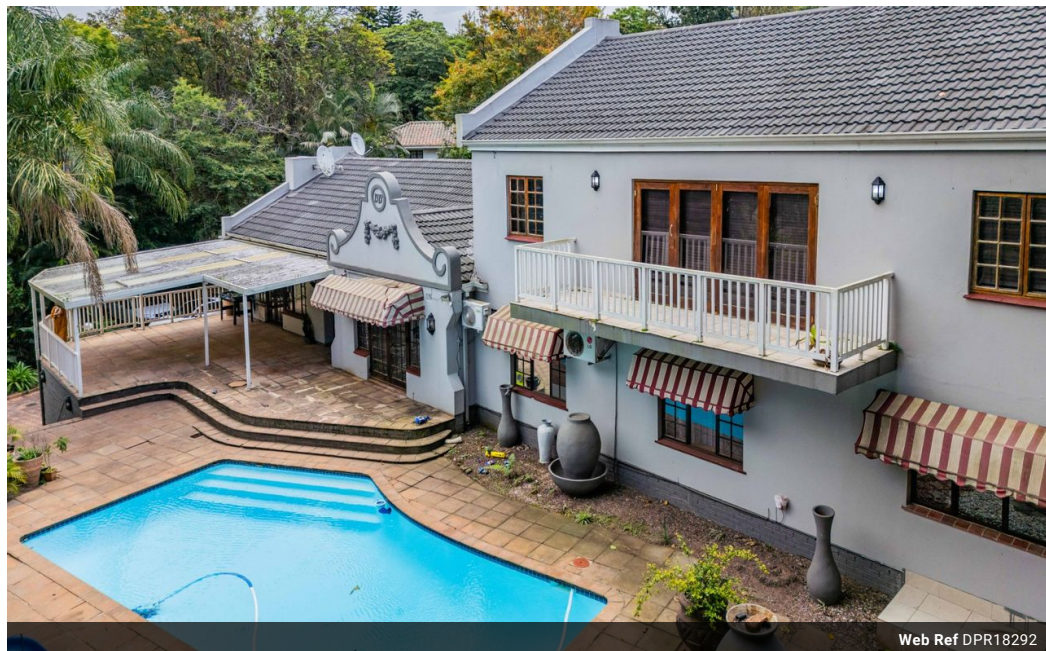


Christy Du Preez
082 300 8532
christydupreez@dpg.co.za

Contact Westville A-Team

031 2664343

1 Knightbridge,
16 Westville Road,
Westville



Web Ref DPR18292



R3,199,000

🛏️ 4 🚿 2 🏠 4

Monthly Bond Repayment R33,019.71

Calculated over 20 years at 11% with no deposit.

Transfer Costs R184,269.00 **Bond Costs** R44,070.00

These calculations are only a guide. Please ask your conveyancer for exact calculations.

Tranquil Westville Living

presents a luxurious residence in Beverley Hills, Westville that offers an exclusive opportunity to experience luxurious living with a sustainable twist. This stunning property features a practical floor plan ready to shape and serve the living pattern of the large active family,

Features

Pets Allowed	Yes		
Interior		Exterior	Sizes
Bedrooms	4	Garages	4
Bathrooms	2	Carports / Parkings	10
Kitchens	1	Security	Yes
Recep. Rooms	3	Pool	Yes
Studies	1	Views	False
Furnished	No		
			Land Size 2,024m ²