



Mervin Donnelly
061 696 8809
mervin.d@dpg.co.za

Contact Head Office - Dormehl Lite

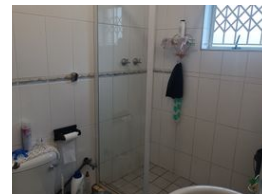
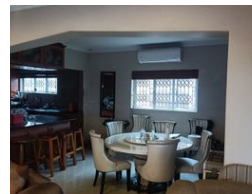
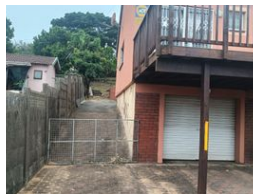
012 0000000

1170 Moulton Avenue
Waverley
0184

NEW



Web Ref DPR18753



R1,380,000

🛏️ 4 🚿 3 🏠 2

Monthly Bond Repayment R14,244.20
Calculated over 20 years at 11% with no deposit.

Transfer Costs R40,017.00 **Bond Costs** R27,105.00
These calculations are only a guide. Please ask your conveyancer for exact calculations.

Beautiful 4 bedroom family home for sale in the Bluff!!!

Dormehl Phalane proudly presents this beautiful family home for sale in the Bluff. The property consists of the following:

- size: 1346 square meters
- 2 lock up garages
- 8 open bay parkings
- 4 fully fitted bedrooms
- 3 family bathrooms
- scullery
- study
- spacious lounge
- fully fitted kitchen
- spacious granny flat
- enclosed balcony
- city views

To view this property contact Mervin Donnelly

Features

Pets Allowed	Yes			
Interior		Exterior		Sizes
Bedrooms	4	Garages	2	Land Size
Bathrooms	3	Carports / Parkings	8	1,346m ²
Kitchens	2	Security	Yes	
Recep. Rooms	1	Pool	No	
Studies	1	Views	True	
Furnished	No			