



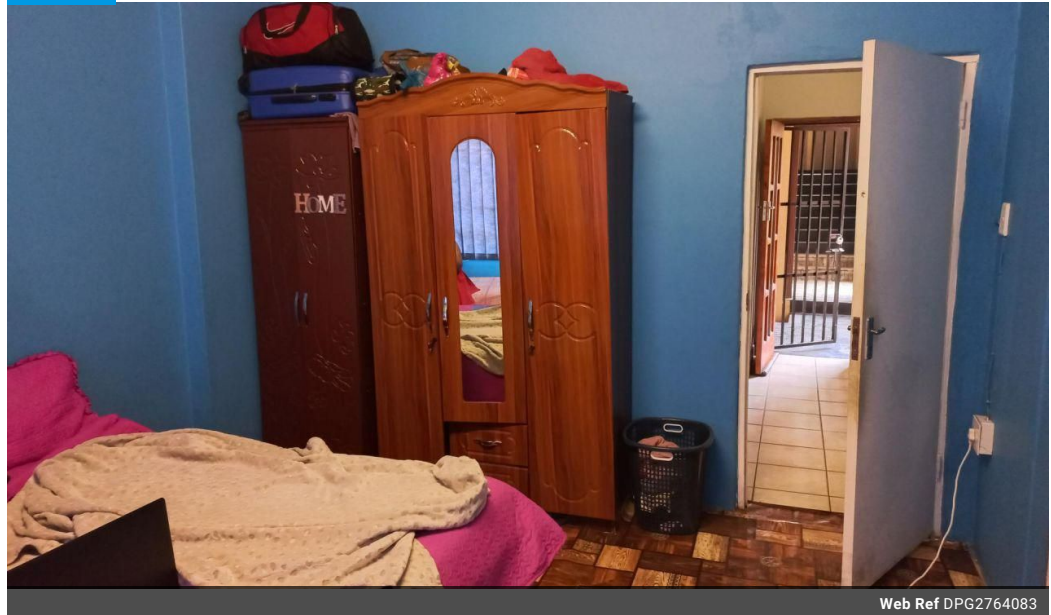
**Mervin Donnelly**  
061 696 8809  
mervin.d@dpg.co.za

Contact Head Office - Dormehl Lite

012 0000000

1170 Moulton Avenue  
Waverley  
0184

FEATURED



Web Ref DPG2764083



R400,000

1.5 Bedrooms 1 Bathrooms

**Monthly Bond Repayment** R4,128.75  
Calculated over 20 years at 11% with no deposit.

**Transfer Costs** R16,806.00    **Bond Costs** R11,960.00  
These calculations are only a guide. Please ask your conveyancer for exact calculations.

**Monthly Levy** R600

1.5 Bedroom Apartment Block For Sale in Bulwer

Calling all investors!!!

Dormehl Phalane proudly presents this spacious 1.5 bedroom for sale in Bulwer. The kitchen is fitted with built in cupboards. Spacious lounge. Bedroom has built in cupboards. Family bathroom. Half bedroom can fit a double bed.

Features

Interior		Exterior	
Bedrooms	1.5	Security	No
Bathrooms	1	Pool	No
Kitchens	1	Views	False
Recep. Rooms	1		
Furnished	No		

