



Bonny Buthelezi
083 948 0217
bonnybuthelezi@dpg.co.za

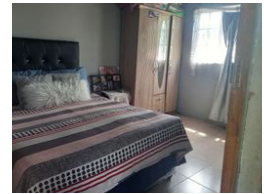
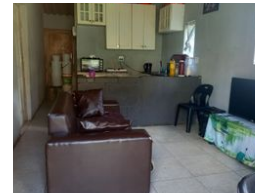
Contact Durban City

031 3011933

343 Anton Lembede Street
511 Perm Building
Durban
4001



Web Ref DPR2459



R500,000

Monthly Bond Repayment R5,160.94
Calculated over 20 years at 11% with no deposit.

Transfer Costs R22,243.00 **Bond Costs** R17,280.50
These calculations are only a guide. Please ask your conveyancer for exact calculations.

2 1

2 Bedroom Semi Detached For Sale in Chesterville

Good investment, great start for the first time buyer. This four room house is situated in Chesterville not far from town. it has offers 2 bedroom, open plan lounge and kitchen, family bathroom, burglar gates, floor tiles, big hard you can built cottages to boost extra income. Close to all amenities public transport, not far to reach pavilion shopping mall, private and public schools, place of worships, Westville prison, Inkosi albert Luthuli hospital, easy to access N2 highway, UKZN university, SAPS, petrol station. Pre-paid electricity.

Features

Pets Allowed	Yes			
Interior		Exterior		Sizes
Bedrooms	2	Security	Yes	Land Size
Bathrooms	1	Pool	No	395m ²
Kitchens	1	Views	False	
Recep. Rooms	1			
Furnished	No			

