



Noleen Dunn
084 803 9972
noleendunn@dpg.co.za

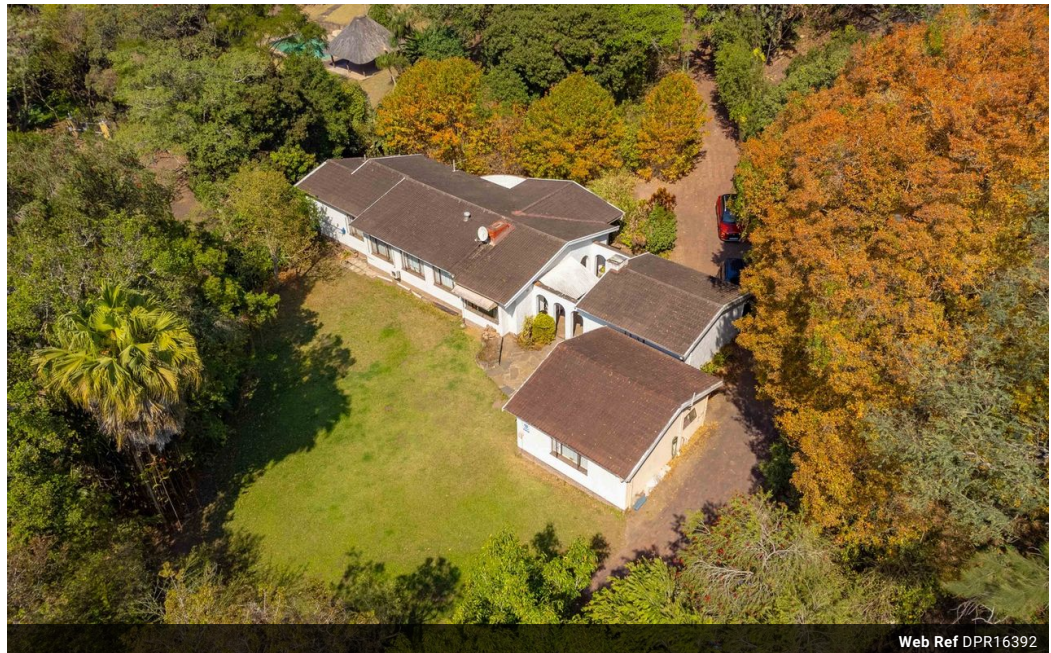


Nicci Arnott
071 887 0870
nicciarnott@dpg.co.za

Contact Westville

031 2669091

Shop 1, Gordana Court,
22/26 Salisbury Avenue,
Westville



Web Ref DPR16392



R1,875,000

4 Bedrooms 2 Bathrooms 2 Carports / Parkings

Monthly Bond Repayment R19,353.53
Calculated over 20 years at 11% with no deposit.

Transfer Costs R67,706.00 **Bond Costs** R32,760.00

These calculations are only a guide. Please ask your conveyancer for exact calculations.

Monthly Rates R2,395

4 BED FAMILY HOME + GRANNY FLAT

In the heart of the sought-after Chiltern Hills, discover the charm of a 4 bedroom house with an open plan lounge which leads out to the kitchen and dining room. With 4 bedrooms and a complete family bathroom, en-suite for added convenience. This home has double garage and a nice piece of land at the back. It also has income generating flatlet that is ideal for renting out or accommodating extended family. This residence is conveniently situated close to the schools.

Features

Pets Allowed		Yes			
Interior				Exterior	
Bedrooms	4	Garages	2	Sizes	
Bathrooms	2	Carports / Parkings	4	Land Size	2,708m ²
Kitchens	1	Security	Yes		
Recep. Rooms	2	Pool	No		
Furnished	No	Views	True		

