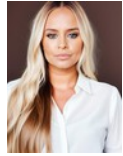




**Lindi Honey**  
082 444 8996  
lindhoney@dpg.co.za



**Christy Du Preez**  
082 300 8532

christydupreez@dpg.co.za

Contact Westville A-Team

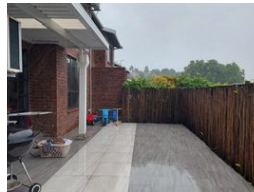
031 2664343

1 Knightbridge,  
16 Westville Road,  
Westville



SOLE MANDATE

Web Ref DPR2060



**R1,650,000**

3 2.5 1

**Monthly Bond Repayment** R17,031.11  
Calculated over 20 years at 11% with no deposit.

**Transfer Costs** R52,453.00 **Bond Costs** R30,875.00

These calculations are only a guide. Please ask your conveyancer for exact calculations.

**Monthly Levy** R1,500 **Monthly Rates** R1,065

No work to be done!

Secure 3 bedroom Duplex in a guarded cul de sac.

Downstairs you have a modern kitchen with granite tops, courtyard and guest loo. Open plan fully tiled lounge and dining room. With doors leading out onto a covered patio and own garden.

Upstairs are 3 well sized bedrooms, modern bathrooms and lovely views. Single garage and an undercover parking.

If you're looking for a lock up and go, for a unit which is neat and Clean with nothing to be done, give us a call!

## Features

**Pets Allowed** Yes

**Interior**  
Bedrooms 3  
Bathrooms 2.5  
Kitchens 1  
Recep. Rooms 2  
Furnished No

**Exterior**  
Garages 1  
Carports / Parkings 1  
Security Yes  
Pool No  
Views True

**Sizes**  
Floor Size 117m<sup>2</sup>