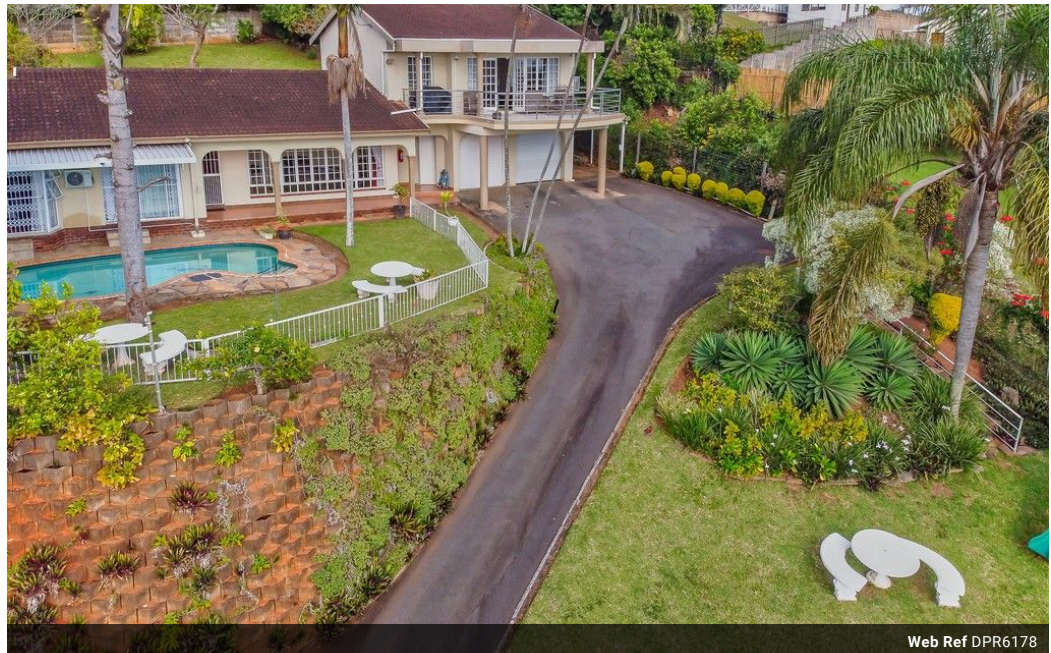


Christy Du Preez
082 300 8532
christydupreez@dpg.co.za

Contact Westville A-Team

031 2664343

1 Knightbridge,
16 Westville Road,
Westville



Web Ref DPR6178



R3,250,000

4 3 2

Monthly Bond Repayment R33,546.12
Calculated over 20 years at 11% with no deposit.

Transfer Costs R192,047.00 **Bond Costs** R45,955.00
These calculations are only a guide. Please ask your conveyancer for exact calculations.

Monthly Rates R2,000

OWNER RELOCATING | ALL REASONABLE OFFERS ACCEPTED DESCRIPTION

Comfort, class & tranquility are some of the many features 26 Queen Elizabeth Drive has. Double storey home offering spectacular views from this above road level home. Recently refurbished with quality finishes and tasteful decor throughout.

3 refurbished bathrooms and 2 lounges. The modern gourmet kitchen is open plan. The home has a fifth bedroom or guest suite off the kitchen.

A stone's throw from Cygnet School and walking distance into central schools. High beams and well-maintained home allows you to move in and enjoy the many features of this proud home.

This gem is worth viewing.

Features

Pets Allowed	Yes			
Interior		Exterior	Sizes	
Bedrooms	4	Garages	Land Size	2,174m ²
Bathrooms	3	Carports / Parkings		
Kitchens	1	Security		
Recep. Rooms	3	Dom. Accom.		
Studies	1	Pool		
Furnished	No	Views		