



Noleen Dunn
084 803 9972
noleendunn@dpg.co.za

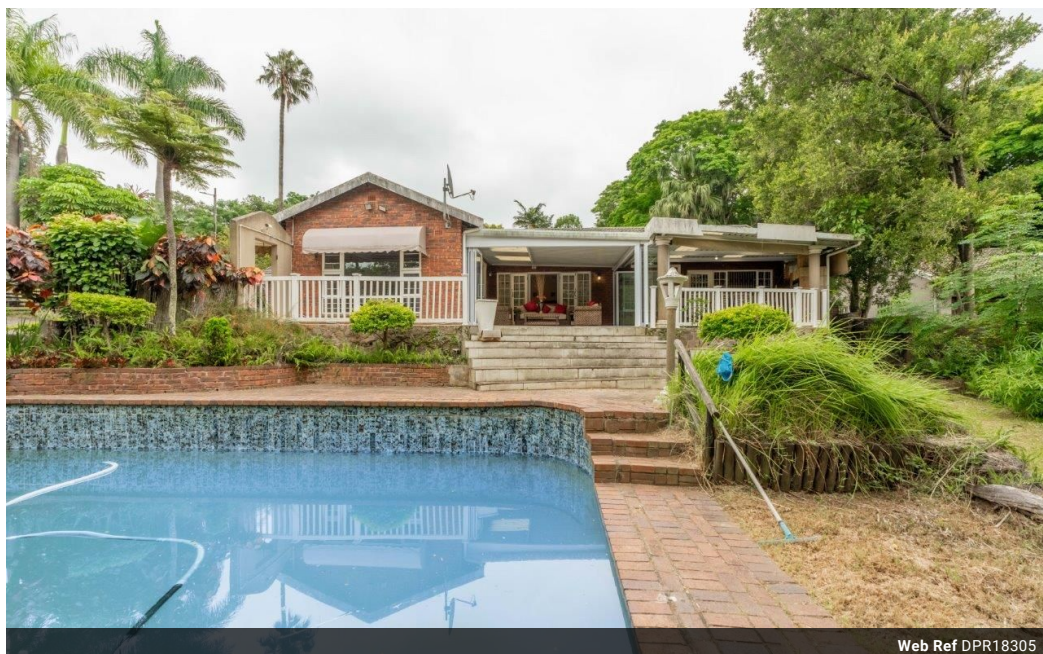


Nicci Arnott
071 887 0870
nicciarnott@dpg.co.za

Contact Westville

031 2669091

Shop 1, Gordana Court,
22/26 Salisbury Avenue,
Westville



Web Ref DPR18305



R2,650,000

3 Bedrooms 2 Bathrooms 2 Carports

Monthly Bond Repayment R27,352.99
Calculated over 20 years at 11% with no deposit.

Transfer Costs R129,887.00 **Bond Costs** R40,300.00
These calculations are only a guide. Please ask your conveyancer for exact calculations.

Monthly Rates R3,008

FAMILY HOME WITH PLENTY OF CHARM!

Step into this breathtaking low maintenance residence, where an inviting open-plan living and dining area welcomes you. The spacious layout is designed for both relaxation and entertainment, allowing for seamless interaction between family and guests. To your left, discover a gorgeous country-style kitchen that is a chef's dream, adorned with exquisite tiles and luxurious granite countertops that not only enhance the aesthetic appeal but also provide durability and functionality.

As you explore further, to your right lies a sophisticated formal lounge. This elegantly designed space exudes comfort and style, making it an ideal spot for unwinding after a long day.

Both the TV lounge and formal lounge flow out to a magnificent covered patio, where outdoor living takes center stage. This inviting space is complete with a built-in...

Features

Pets Allowed	Yes		
Interior		Exterior	Sizes
Bedrooms	3	Garages	Land Size
Bathrooms	2	Carports / Parkings	1,896m ²
Kitchens	1	Security	
Recep. Rooms	3	Dom. Accom.	
Furnished	No	Pool	
		Views	

