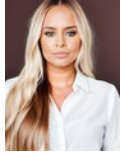




Lindi Honey
082 444 8996
lindhoney@dpg.co.za



Christy Du Preez
082 300 8532

christydupreez@dpg.co.za

Contact Westville A-Team

031 2664343

1 Knightbridge,
16 Westville Road,
Westville



Web Ref DPR18800



R1,850,000

4 2 2

Monthly Bond Repayment R19,095.49
Calculated over 20 years at 11% with no deposit.

Transfer Costs R66,206.00 **Bond Costs** R32,760.00

These calculations are only a guide. Please ask your conveyancer for exact calculations.

Monthly Rates R2,227

Your Dream Westville Home in a Top School Zone!

Step into your dream family home in idyllic Dawncliffe, Westville, Priced at an exceptional R 1,850,000, this charming 4-bedroom, 2-bathroom home nestled above road level in a cul de sac, is everything your family needs!

Feel warmly welcomed by an abundance of natural light and the spacious feel of 2 lounges as you enter. Picture yourself preparing family meals or entertaining friends in the open plan kitchen, overlooking green vistas of your private garden - yes, our borders are also pet-friendly!

Slide open the doors from the main lounge to extend your living space onto an open view patio. This fabulous outdoor space is perfect for a hot cup of coffee in tranquil mornings or fun-filled family BBQ's on sunny South African afternoons!

Worried about parking space? No worries there, with room for 6! Direct access from a...

Features

Pets Allowed	Yes				
Interior		Exterior		Sizes	
Bedrooms	4	Garages	2	Land Size	1,800m ²
Bathrooms	2	Carports / Parkings	4		
Kitchens	1	Security	Yes		
Recep. Rooms	3	Dom. Accom.	1		
Furnished	No	Pool	No		
		Views	False		