

Noleen Dunn
084 803 9972
noleendunn@dpg.co.za

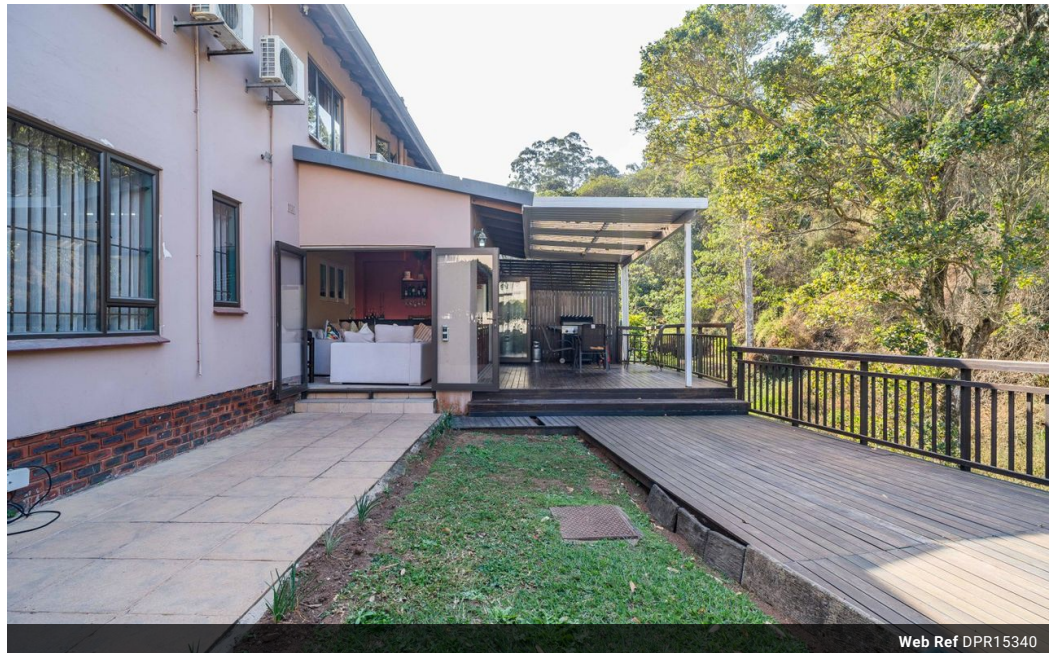


Nicci Arnott
071 887 0870
nicciarnott@dpg.co.za

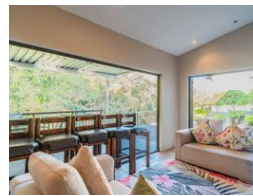
Contact Westville

031 2669091

Shop 1, Gordana Court,
22/26 Salisbury Avenue,
Westville



Web Ref DPR15340



R1,895,000

3 2 1

Monthly Bond Repayment R19,559.97
Calculated over 20 years at 11% with no deposit.

Transfer Costs R68,906.00 **Bond Costs** R32,760.00

These calculations are only a guide. Please ask your conveyancer for exact calculations.

Monthly Rates R1,700

EXCEPTIONAL TOWNHOUSE IN DAWNCLIFFE

This exceptional townhouse, one of only two units available, boasts a generous 183 sqm of living space and the added bonus of NO LEVIES!

As you enter this beautifully renovated home, you'll immediately notice the owners meticulous attention to detail. The lower level features a stunning open-plan kitchen that seamlessly flows into an inviting sunroom, enhanced by stacker doors that open onto a covered entertainment deck. This outdoor space offers views of the tranquil stream and includes a garden area perfect for children or your furry friends to enjoy.

The kitchen also connects to a comfortable living area and a cozy dining space, making this home ideal for both relaxation and entertaining.

As you make your way upstairs, you'll find three spacious bedrooms and a fully equipped family bathroom. The master suite includes an...

Features

Pets Allowed	Yes		
Interior		Exterior	Sizes
Bedrooms	3	Garages	Floor Size
Bathrooms	2	Carports / Parkings	Land Size
Kitchens	1	Security	183m ²
Recep. Rooms	3	Dom. Accom.	3,002m ²
Furnished	No	Pool	
		Views	True

