



Noleen Dunn
084 803 9972
noleendunn@dpg.co.za



Nicci Arnott
071 887 0870
nicciarnott@dpg.co.za

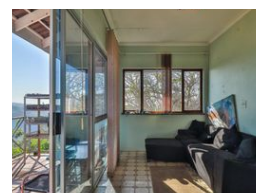
Contact Westville

031 2669091

Shop 1, Gordana Court,
22/26 Salisbury Avenue,
Westville



Web Ref DPR17497



R2,550,000



Monthly Bond Repayment R26,320.80
Calculated over 20 years at 11% with no deposit.

Transfer Costs R119,720.00 **Bond Costs** R38,415.00
These calculations are only a guide. Please ask your conveyancer for exact calculations.

Monthly Rates R2,233

WALK TO WESTVILLE BOYS HIGH SCHOOL!

Experience the pinnacle of refined living in this stunning 3-bedroom family residence, thoughtfully crafted and perfectly situated in the desirable Westville neighborhood. This charming home embodies a serene lifestyle while being conveniently close to all the amenities you could desire.

As you step inside, you'll be captivated by the inviting living area, featuring elegant laminate flooring that flows seamlessly into a stylish dining space. Step out onto the outdoor sundeck, where you can soak in breathtaking views of the picturesque Westville landscape. Picture yourself hosting delightful sundowner gatherings or cozy family dinners against such a stunning backdrop—an enviable feature that only a fortunate few can claim.

The master suite is a true retreat, complete with a luxurious full en-suite bathroom, enhancing the...

Features

Pets Allowed	Yes			
Interior		Exterior		Sizes
Bedrooms	3	Garages	1	Land Size
Bathrooms	1	Carports / Parkings	4	1,076m ²
Kitchens	1	Security	Yes	
Recep. Rooms	2	Pool	Yes	
Furnished	No	Views	True	

