

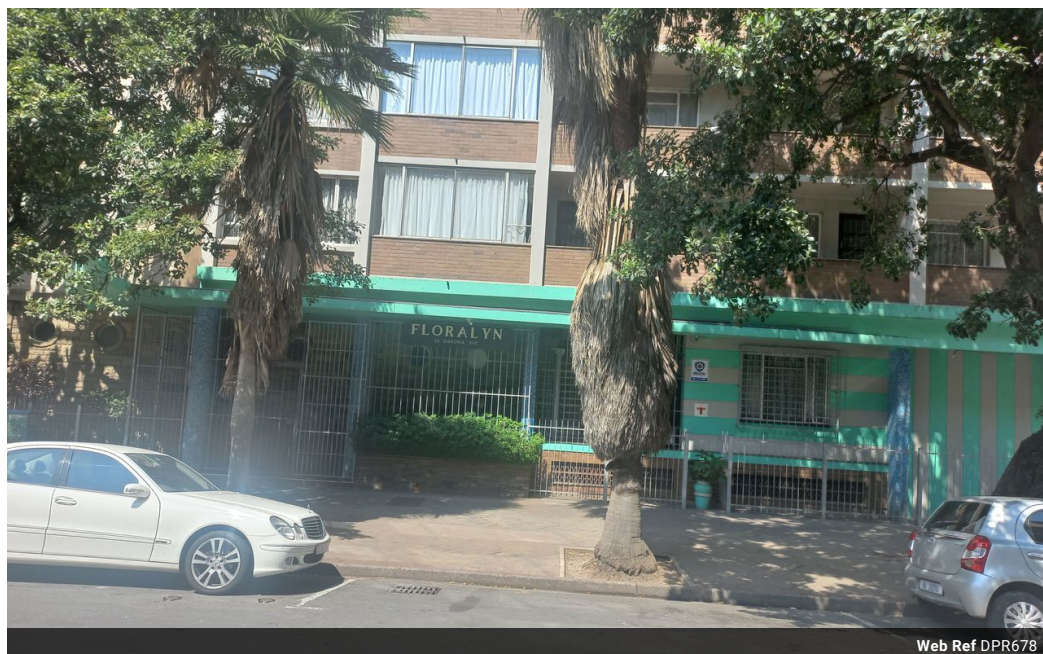


Mervin Donnelly
061 696 8809
mervin.d@dpg.co.za

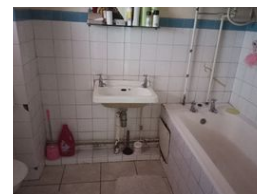
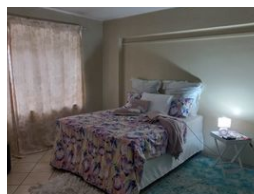
Contact Head Office - Dormehl Lite

012 0000000

1170 Moulton Avenue
Waverley
0184



Web Ref DPR678



R430,000

0.5 1

Monthly Bond Repayment R4,438.41
Calculated over 20 years at 11% with no deposit.

Transfer Costs R21,196.00 **Bond Costs** R16,234.00
These calculations are only a guide. Please ask your conveyancer for exact calculations.

Monthly Levy R1,200

Calling all first time buyers and investors!!!

Dormehl Phalane proudly presents this bachelor unit for sale close to Durban harbour.

To view this property contact Mervin Donnelly

Features

Interior		Exterior	
Bedrooms	0.5	Security	No
Bathrooms	1	Pool	No
Kitchens	1	Views	False
Recep. Rooms	1		
Furnished	No		