

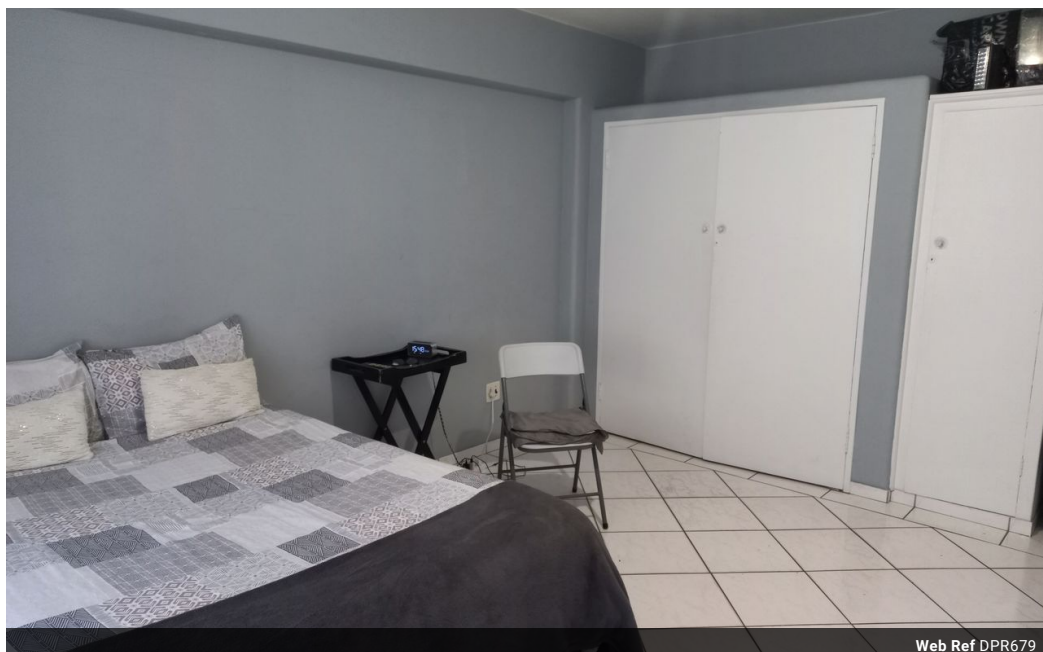


**Mervin Donnelly**  
061 696 8809  
mervin.d@dpg.co.za

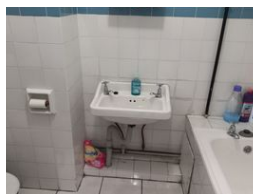
Contact Head Office - Dormehl Lite

012 0000000

1170 Moulton Avenue  
Waverley  
0184



Web Ref DPR679



**R430,000**

0.5 1

**Monthly Bond Repayment** R4,438.41  
Calculated over 20 years at 11% with no deposit.

**Transfer Costs** R17,928.00    **Bond Costs** R12,935.00  
These calculations are only a guide. Please ask your conveyancer for exact calculations.

**Monthly Levy** R1,200

Calling all first time buyers and investors!!!

Dormehl Phalane proudly presents this spacious bachelor apartment close to Durban harbour.

To view this property please contact Mervin Donnelly

**Features**

<b>Interior</b>		<b>Exterior</b>	
Bedrooms	0.5	Security	No
Bathrooms	1	Pool	No
Kitchens	1	Views	False
Recep. Rooms	1		
Furnished	No		