



Mervin Donnelly
061 696 8809
mervin.d@dpg.co.za

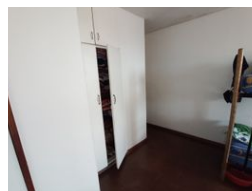
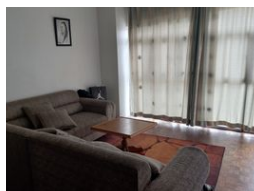
Contact Head Office - Dormehl Lite

012 0000000

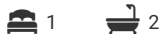
1170 Moulton Avenue
Waverley
0184



Web Ref DPR1296



R475,000



Monthly Bond Repayment R4,902.89
Calculated over 20 years at 11% with no deposit.

Transfer Costs R19,049.00 **Bond Costs** R13,910.00
These calculations are only a guide. Please ask your conveyancer for exact calculations.

Monthly Levy R1,300

Calling all first time buyers and investors!!!

Dormehl Phalane proudly presents this 1 bedroom apartment for sale on the Esplanade. This property consists of:

- 1 bedroom fully fitted
- family bathroom
- 1 MES
- spacious lounge
- standard kitchen
- no parking

To view this property contact Mervin Donnelly

Features

Interior		Exterior	
Bedrooms	1	Security	No
Bathrooms	2	Pool	No
Kitchens	1	Views	False
Recep. Rooms	1		
Furnished	No		