

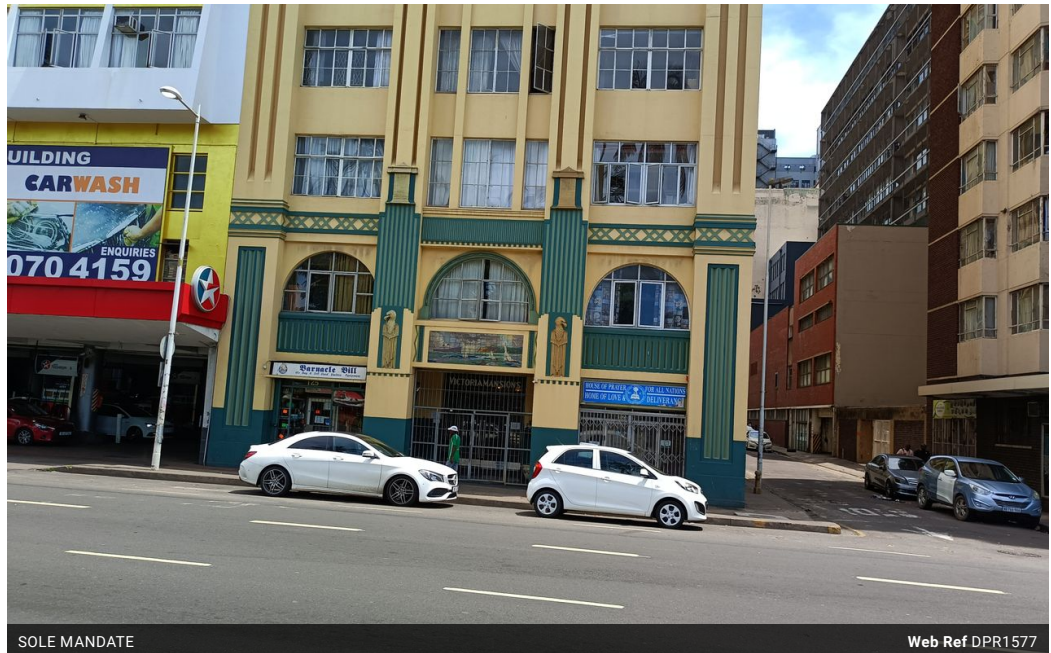


Mervin Donnelly
061 696 8809
mervin.d@dpg.co.za

Contact Head Office - Dormehl Lite

012 0000000

1170 Moulton Avenue
Waverley
0184



SOLE MANDATE

Web Ref DPR1577



R299,000

🛏 0.5 🚿 1

Monthly Bond Repayment R3,086.24
Calculated over 20 years at 11% with no deposit.

Transfer Costs R15,517.00 **Bond Costs** R10,985.00
These calculations are only a guide. Please ask your conveyancer for exact calculations.

Calling all first time buyers and investors!!!

Dormehl Phalane proudly presents this spacious bachelor for sale on the esplanade.

To view this property please contact Mervin Donnelly

Features

Interior		Exterior	
Bedrooms	0.5	Security	No
Bathrooms	1	Pool	No
Kitchens	1	Views	False
Recep. Rooms	1		
Furnished	No		