



Mervin Donnelly
061 696 8809
mervin.d@dpg.co.za

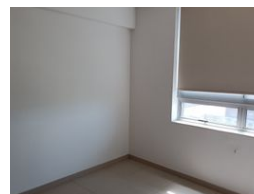
Contact Head Office - Dormehl
Lite

012 0000000

1170 Moulton Avenue
Waverley
0184



Web Ref DPR11918



R2,500,000

2 1

Monthly Bond Repayment R25,804.71
Calculated over 20 years at 11% with no deposit.

Transfer Costs R115,720.00 **Bond Costs** R38,415.00
These calculations are only a guide. Please ask your conveyancer for exact calculations.

Monthly Levy R4,193

Stunning beachfront apartment for sale!!!

Dormehl Phalane proudly presents this stunning 2 bedroom apartment for sale in North beach. The property consists of:

- 360 degree sea views
- close to all amenities
- walking distance to the beach
- 2 spacious bedrooms modern and fully fitted
- 1 bathroom
- separate toilet
- 1 undercover parking
- modern fully fitted kitchen

To view this property please contact Mervin Donnelly

Features

Interior		Exterior	
Bedrooms	2	Carports / Parkings	1
Bathrooms	1	Security	Yes
Kitchens	1	Pool	No
Recep. Rooms	1	Views	True
Furnished	No		