



Mervin Donnelly
061 696 8809
mervin.d@dpg.co.za

Contact Head Office - Dormehl Lite

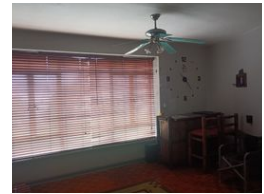
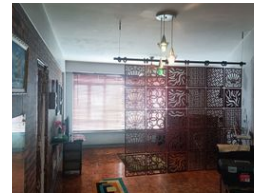
012 0000000

1170 Moulton Avenue
Waverley
0184



SOLE MANDATE

Web Ref DPR18352



R450,000

Monthly Bond Repayment R4,644.85
Calculated over 20 years at 11% with no deposit.

Transfer Costs R17,928.00 **Bond Costs** R12,935.00

These calculations are only a guide. Please ask your conveyancer for exact calculations.



Calling all first time buyers and investors!!!

Dormehl Phalane proudly presents this well maintained apartment for sale on the esplanade. The property consists of:
1 bedroom fully fitted with modern finishes
fully fitted kitchen with granite tops,HOB,extractor fan,UCO
spacious lounge
family bathroom
well maintained apartment
360 degree harbor views

To view this property please contact Mervin Donnelly

Features

Interior

Bedrooms	1
Bathrooms	1
Kitchens	1
Furnished	No

Exterior

Security	Yes
Pool	No
Views	True