

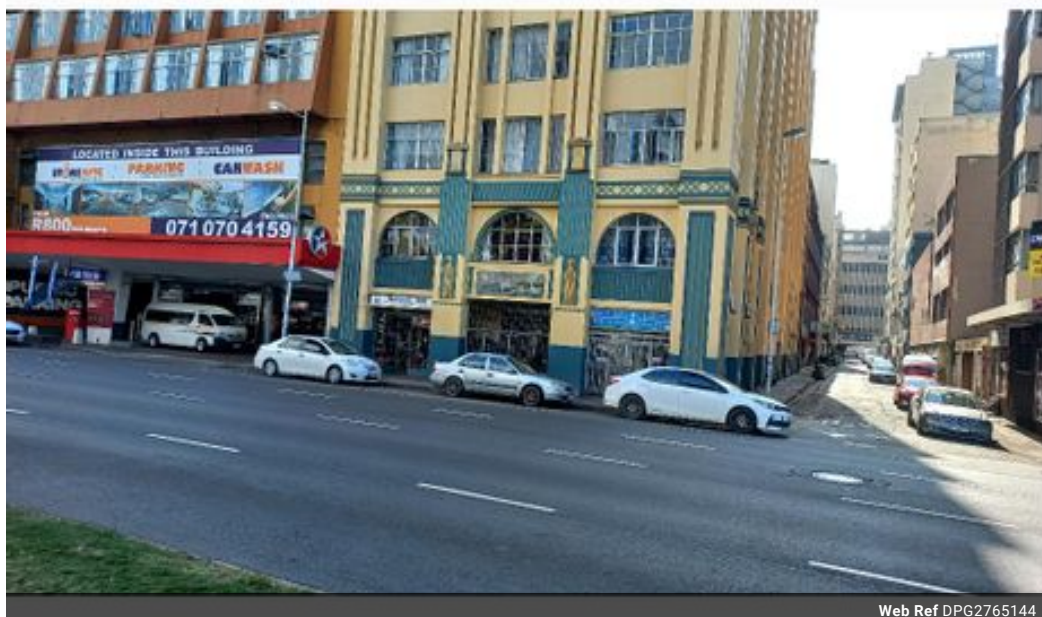


Mervin Donnelly
061 696 8809
mervin.d@dpg.co.za

Contact Head Office - Dormehl Lite

012 0000000

1170 Moulton Avenue
Waverley
0184



Web Ref DPG2765144



R285,000

🛏 0.5 🚿 1

Monthly Bond Repayment R2,941.74
Calculated over 20 years at 11% with no deposit.

Transfer Costs R15,517.00 **Bond Costs** R10,985.00

These calculations are only a guide. Please ask your conveyancer for exact calculations.

Monthly Levy R2,200

0.5 Bedroom Apartment Block For Sale in Esplanade

Batchelor apartment for sale on the Esplanade!!!

Dormehl Phalane proudly presents this batchelor apartment for sale on the Esplanade. The property consists of:

- 360 degree harbour views
- family bathroom
- spacious lounge/bedroom
- kitchen has built in cupboards
- no parking

To view this property please contact Mervin Donnelly

Features

Interior		Exterior	
Bedrooms	0.5	Pool	No
Bathrooms	1		
Recep. Rooms	1		

