



Mervin Donnelly
061 696 8809
mervin.d@dpg.co.za

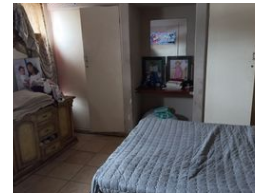
Contact Head Office - Dormehl Lite

012 0000000

1170 Moulton Avenue
Waverley
0184



Web Ref DPR1334



R625,000

Monthly Bond Repayment R6,451.18
Calculated over 20 years at 11% with no deposit.

Transfer Costs R23,730.00 **Bond Costs** R17,680.00
These calculations are only a guide. Please ask your conveyancer for exact calculations.



Calling all first time buyers and investors!!!

Dormehl Phalane proudly presents this 1 bedroom apartment for sale on the Esplanade. The property consists of:

- Huge lounge
- Fitted kitchen needs fixing
- family bathroom
- enclosed balcony
- 1 parking

To view this property contact Mervin Donnelly

Features

Interior		Exterior	
Bedrooms	1	Garages	1
Bathrooms	1	Security	No
Kitchens	1	Pool	No
Recep. Rooms	1	Views	False
Furnished	No		