

2.5 Bedroom Apartment For Sale in Esplanade

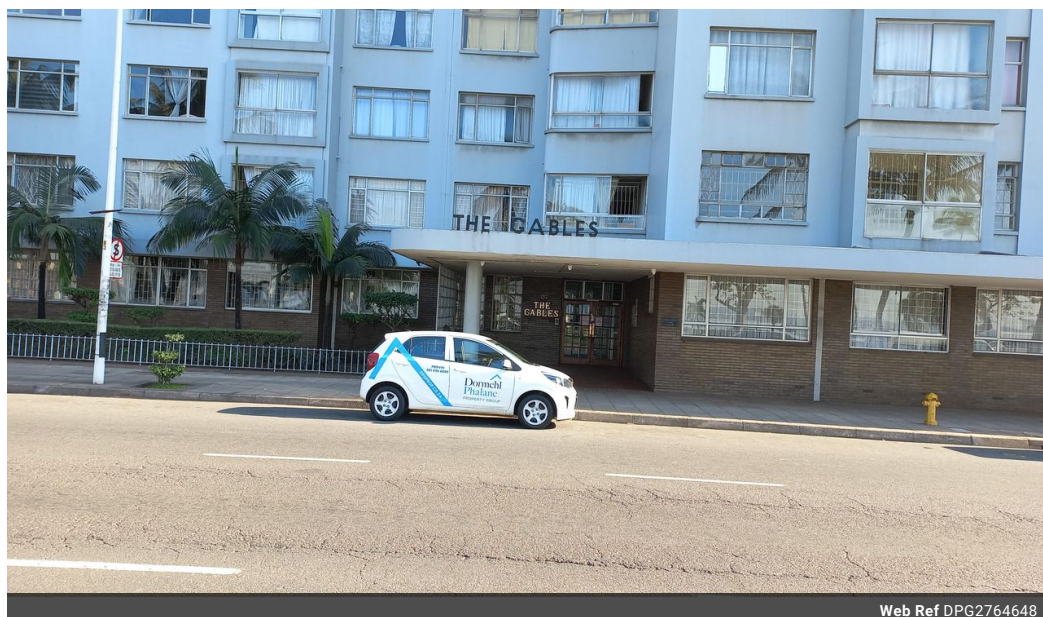


Mervin Donnelly
061 696 8809
mervin.d@dpg.co.za

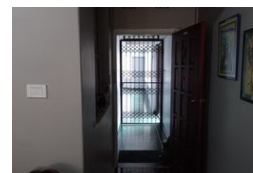
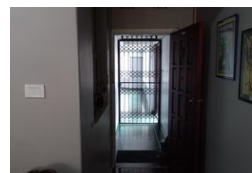
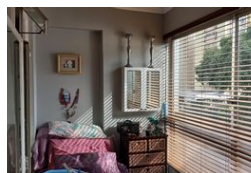
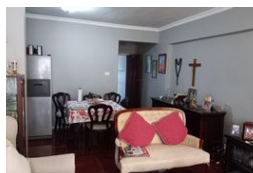
Contact Head Office - Dormehl
Lite

012 0000000

1170 Moulton Avenue
Waverley
0184



Web Ref DPG2764648



R900,000

Monthly Bond Repayment R9,289.70
Calculated over 20 years at 11% with no deposit.

Transfer Costs R28,244.00 **Bond Costs** R21,450.00

These calculations are only a guide. Please ask your conveyancer for exact calculations.

2.5 1

2.5 Bedroom Apartment For Sale in Esplanade

Stunning 2.5 bedroom apartment for sale on the Esplanade!!!

Dormehl Phalane proudly presents this stunning 2.5 bedroom apartment opposite the Durban harbor. The property consist of:
high end finishes
kitchen fully fitted with UCO,HOB,extractor fan, granite tops
Family bathroom with shower
separate toilet
enclosed balcony that fits a double bed
Both bedrooms are fully fitted with built in cupboards
spacious lounge
tiled
1 undercover parking

To view this property please contact Mervin Donnelly

Features

Interior

Bedrooms	2.5
Bathrooms	1
Recep. Rooms	1

Exterior

Carports / Parkings	1
Pool	No

