



Mervin Donnelly
061 696 8809
mervin.d@dpg.co.za

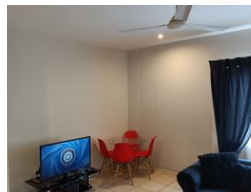
Contact Head Office - Dormehl Lite

012 0000000

1170 Moulton Avenue
Waverley
0184



Web Ref DPR3441



R925,000

2 2 2

Monthly Bond Repayment R9,547.74
Calculated over 20 years at 11% with no deposit.

Transfer Costs R30,412.00 **Bond Costs** R23,335.00

These calculations are only a guide. Please ask your conveyancer for exact calculations.

Monthly Levy R1,500 **Monthly Rates** R800

Modern 2 bedroom apartment for sale in Essenwood!!!

Levies: R1500
Rates: R800

Dormehl Phalane properties proudly presents this modern 2 bedroom apartment for sale in Essenwood. This property consists of:

- size : 65 sqm
- close to all amenities
- apartment tiled
- kitchen fully fitted with HOB,UCO,bics and extractor fan,granite tops
- spacious lounge
- 2 bedrooms fully fitted with bics
- family bathroom with shower and bathroom
- 2 undercover parkings
- remote control access

To view this property contact Mervin Donnelly

Features

Interior		Exterior	
Bedrooms	2	Garages	2
Bathrooms	2	Security	No
Kitchens	1	Pool	No
Recep. Rooms	1	Views	False
Furnished	No		