

**Stacy Fernandez**  
069 354 3613  
stacy.f@dpg.co.za

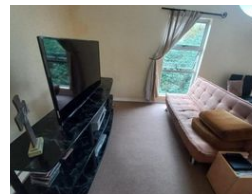
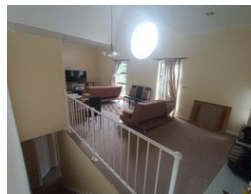
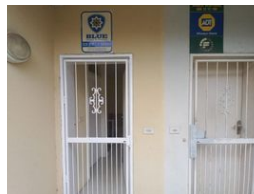
Contact Head Office - Dormehl Lite

012 0000000

1170 Moulton Avenue  
Waverley  
0184



Web Ref DPR5822



**R980,000**

3   2.5

**Monthly Bond Repayment** R10,115.45  
Calculated over 20 years at 11% with no deposit.

**Transfer Costs** R30,412.00   **Bond Costs** R23,335.00  
These calculations are only a guide. Please ask your conveyancer for exact calculations.

**Monthly Rates** R780

**3 BEDROOM SEMI DETACHED HOUSE FOR SALE**

Dormehl Phalane property group offers you this cozy 3 bedroom semi detached house which is fully fitted and very spacious. It has open plan lounge and dining area with a fitted kitchen. There is 1x En-suite with a family bathroom and 1x guest toilet. The property is fully burglar guarded with a patio and 1x undercover parking bay. Close to all amenities.

**Features**

<b>Pets Allowed</b>	Yes		
<b>Interior</b>		<b>Exterior</b>	<b>Sizes</b>
Bedrooms	3	Carports / Parkings	1
Bathrooms	2.5	Security	No
Kitchens	1	Pool	No
Recep. Rooms	2	Views	False
Furnished	No		
			Floor Size
			169m <sup>2</sup>