



Mervin Donnelly
061 696 8809
mervin.d@dpg.co.za

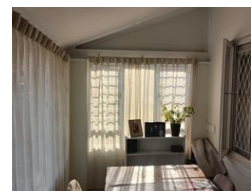
Contact Head Office - Dormehl Lite

012 0000000

1170 Moulton Avenue
Waverley
0184



Web Ref DPR14117



R1,650,000

3 1 1

Monthly Bond Repayment R17,031.11
Calculated over 20 years at 11% with no deposit.

Transfer Costs R52,453.00 **Bond Costs** R30,875.00
These calculations are only a guide. Please ask your conveyancer for exact calculations.

Family home for sale in Glenwood!!!

Dormehl Phalane proudly presents this family home for sale in Glenwood. The property consists of:
electric fencing
1 lockup garage
open parking for approximately 3 cars
aircon in 2 bedrooms
family bathroom
fully fitted kitchen
remote control gate
bachelor granny flat
spacious lounge
3 bedrooms fully fitted

To view this property please contact Mervin Donnelly

Features

Pets Allowed	Yes		
Interior		Exterior	
Bedrooms	3	Garages	1
Bathrooms	1	Carports / Parkings	3
Kitchens	1	Security	Yes
Recep. Rooms	1	Pool	No
Furnished	Yes	Views	False