

Noleen Dunn
084 803 9972
noleendunn@dpg.co.za

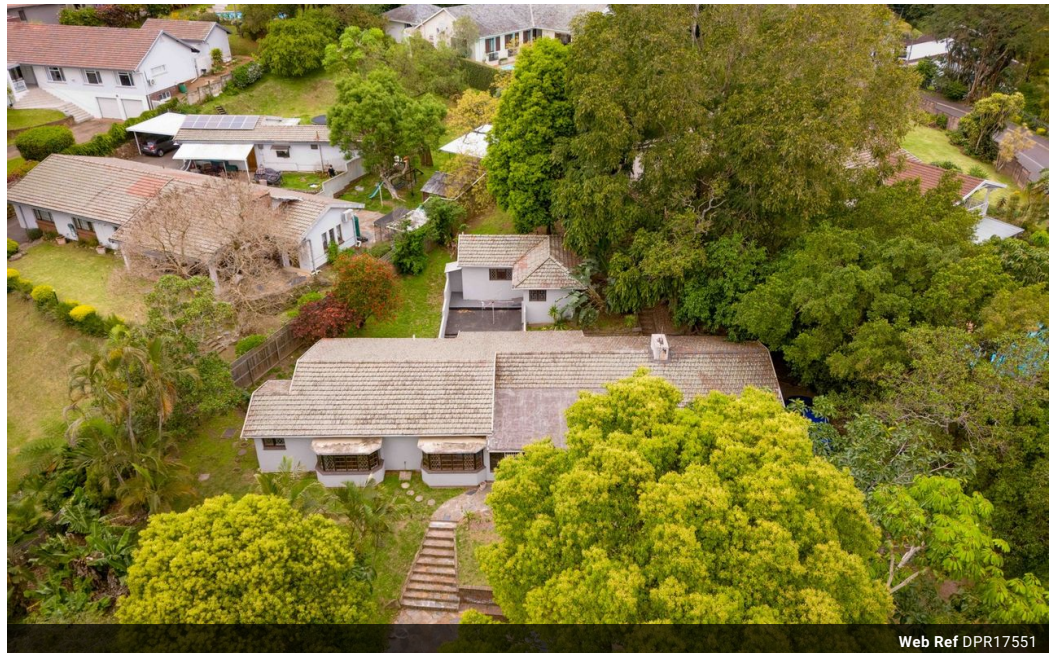


Nicci Arnott
071 887 0870
nicciarnott@dpg.co.za

Contact Westville

031 2669091

Shop 1, Gordana Court,
22/26 Salisbury Avenue,
Westville



Web Ref DPR17551



R2,250,000

3 Bedrooms 2 Bathrooms 2 Carports

Monthly Bond Repayment R23,224.24
Calculated over 20 years at 11% with no deposit.

Transfer Costs R95,138.00 **Bond Costs** R36,530.00
These calculations are only a guide. Please ask your conveyancer for exact calculations.

Monthly Rates R1,968

SPACIOUS FAMILY HOME

When you are looking for a home that is spacious with all living on one level look no further. Close to central Westville and quick access to M13 and central schools. Small teenpad or use as an office. Ample extra parking.

Features

Pets Allowed	Yes			
Interior		Exterior		Sizes
Bedrooms	3	Garages	2	Land Size
Bathrooms	2	Carports / Parkings	4	2,051m ²
Kitchens	1	Security	Yes	
Recep. Rooms	3	Pool	Yes	
Studies	1	Views	True	
Furnished	No			

