



Jenny Grant
082 655 2117
jennygrant@dpg.co.za

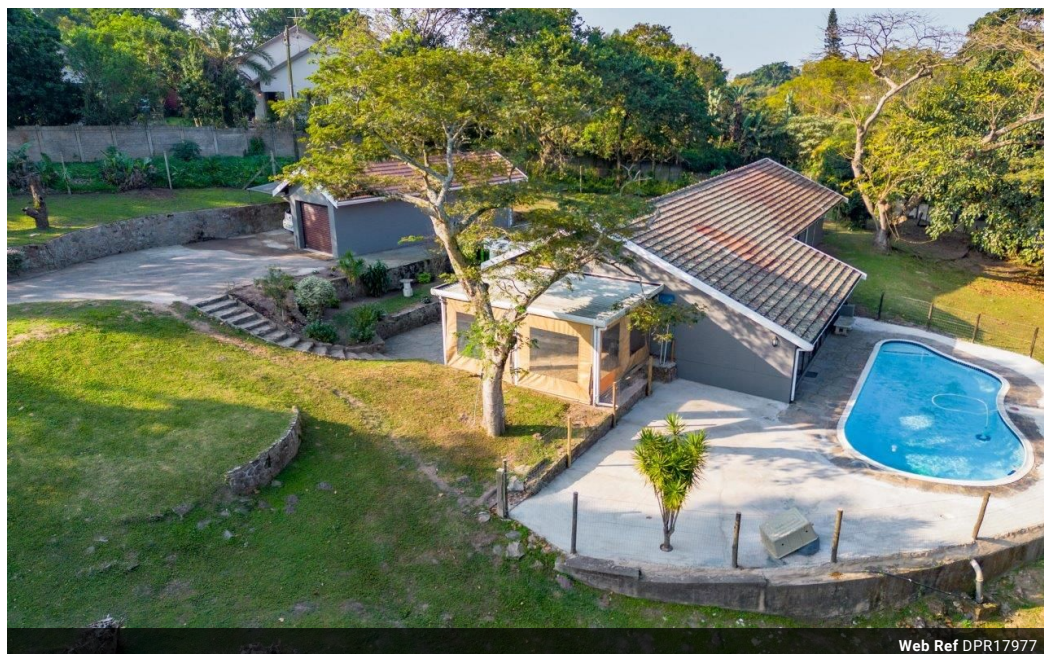


Sheri Minter
031 266 9091
sheriminter@dpg.co.za

Contact Westville

031 2669091

Shop 1, Gordana Court,
22/26 Salisbury Avenue,
Westville



Web Ref DPR17977



R2,295,000

3 Bedrooms 2 Bathrooms 1 Garage

Monthly Bond Repayment R23,688.72
Calculated over 20 years at 11% with no deposit.

Transfer Costs R97,838.00 **Bond Costs** R36,530.00

These calculations are only a guide. Please ask your conveyancer for exact calculations.

Monthly Rates R2,170

FAMILY HOME IN DESIRABLE LOCATION!

Lovely spacious family home offers two lounges, open plan dining and living areas, gorgeous kitchen with separate scullery. 3 sun filled bedrooms with the master suite offering an en suite bathroom and a pyjama lounge. Large entertaining patio, swimming pool and lush garden. Single auto garage, Staff accommodation and great security.

Features

Pets Allowed	Yes		
Interior		Exterior	Sizes
Bedrooms	3	Garages	1
Bathrooms	2	Carports / Parkings	6
Kitchens	1	Security	Yes
Recep. Rooms	3	Dom. Accom.	1
Studies	1	Pool	Yes
Furnished	No	Views	True
		Land Size	2,500m ²

